

200MF accu

ATLAS

MADE IN GERMANY. SINCE 1919.



OPERATING WEIGHT	21.0 T
BATTERY CAPACITY	115 kWh
REACH	11.6 m

ATLAS. FOR HIGHER EFFICIENCY.

Experience the result of more than 100 years of expertise: robust perfection, high-grade details, and well-engineered functionality. As a competent and highly efficient manufacturer of premium construction machinery in Germany, ATLAS develops loader cranes, excavators and material handlers – **as customized, individual special solutions as well.** ATLAS is the construction machine for toughest applications and for all who are looking for uncompromising quality.

**ATLAS POWER OF INNOVATION.
MADE IN GERMANY.**

“For more than a century, our highly motivated employees devote themselves every day with unfailing dedication to the design and assembly of tailor-made excavators and cranes that serve to significantly speed up your working processes and make them more efficient. Our dedication is reflected in working tenaciously every day in order to create innovative solutions. This tradition, which extends over generations, is proof of our continuous commitment to developing high-quality machines that meet the ever-changing requirements and challenges of our time.”

Brahim Stitou, CEO



200 YEARS



BUILT TO MOVE BIG THINGS.

**CUSTOMIZED SOLUTIONS FOR A GREAT FUTURE.
ECO-FRIENDLY, VERSATILE, AND PERFECTLY FUNCTIONAL.
ATLAS CONSTRUCTION MACHINERY MADE IN GERMANY – FOR MORE
THAN 100 YEARS SECOND TO NONE.**

// Whatever we tackle, it will be impressive!

In our corporate history spanning more than 100 years, we have learned: We think big and implement it. Our secret to success lies in the combination of efficiency, technological supremacy, and in-depth discussions with customers. This makes our construction machinery so versatile and strong! From standard model all the way to custom-made design – we have the best solution for any challenge.

State-of-the-art ideas and innovative concepts are the foundation for construction machines that meet the highest standards in a wide range of applications.

Once again, the result is impressive: our first battery-powered material handling machine ATLAS 200MH accu. An excavator like no other. This material handler is unique in its own way because it impresses by its outstanding energy efficiency, low-noise operation, and its remarkable long service life.

OPERATING WEIGHT	21.0 T
BATTERY CAPACITY	115 kWh
REACH	11.6 m

THAT'S WHAT AN ATLAS IS ALL ABOUT.

ZERO EMISSIONS

At an assumed annual operating time of 2,000 hours and an energy generation from renewable energy sources, the battery-powered excavator saves 30 tons of CO₂ on average per year. No maintenance work is required; at the same time, the machine operates completely without fossil fuels and also vibration and noise reduced. **This sustainable mode of operation noticeably relieves the strain on human health and the environment.**

POWERFUL LITHIUM-ION BATTERY

Particularly long service life: The 200MH accu features a **certified high-voltage battery system with a service life of at least 4,000 full load cycles**. In addition, the integrated power electronics ensure an especially gentle starting of the motor to protect the supply system.

UNIQUE UNDERCARRIAGE DESIGN

Thanks to its **outstanding stability** the unique undercarriage design combined with a powerful drive motor will not let you down even in most challenging scenarios!

FAST RECHARGING WITH HIGH CHARGING POWER

Under standard conditions, it takes **60 minutes to recharge the battery to 86% of its capacity (SoC)**.

OPTIMUM SAFETY

A large cab door and non-slip steps ensure **safer access to the cab**. We also thought of the **cab lighting**. Needless to say, that all precautionary measures are incorporated into the cab design for that extra bit of **safety according to ROPS & FOPS**.

POWERFUL HYDRAULICS

With the efficient hydraulics, excavator drivers can demonstrate with the **power** of an ATLAS 200MH accu that they have what it takes: perform demanding tasks **fast at full capacity**. Thus, when **precision** is required, sensitive work movements become a manageable task. Under load as well.

HIGH MACHINE AVAILABILITY

This ingenious combination of **high-quality components** ensures reliable performance. All are nicely boxed thanks to the **robust design**. And the **telemetric system** provides all relevant data to prevent the project from coming to a halt.

WORKING EQUIPMENT FROM IN-HOUSE MANUFACTURING

Our **in-house manufacturing** allows for **great flexibility** and a choice of individual solutions – exactly to customer request. The **quick-change device** originates from our production as well.

COMFORTABLE CAB

Our best cab with the perfect combination of clearly arranged controls, operating comfort, and health protection! It features **360° panoramic view** for higher safety, **air conditioning** to keep your cool and for clean air as well as an **ergonomically adjustable seat** to reduce work fatigue.

POWERFUL. MAINTENANCE-FREE. AND QUIET.



NO BURNING OF FOSSIL FUELS

The 200 MH accu can be operated without burning fossil fuels.



LOW NOISE LEVEL – BOTH INSIDE AND OUTSIDE

The machine works noticeably quieter and vibrates less compared to diesel-powered machines.



MAINTENANCE-FREE AND REDUCED SERVICE WORK

With our product we not only offer you a maintenance-free solution but also significantly reduced service work. Enjoy the benefits of a reliable technology that reduces your operating costs and, at the same time, saves time and resources.



POWERFUL BATTERY

Experience the future of energy efficiency with our batteries that offer an extremely long service life. Thanks to our innovative climate control technology, the battery cells always remain at ideal temperatures, which maximizes their capacity and service life. Say goodbye to downtime and expensive battery changes – with our solutions you can rely on continuous performance.

ELEVATED VIEW THANKS TO ATLAS CAB LIFT



Discover the ultimate comfort with our cab lift, which ensures that you keep an eye on everything. With an impressive height of up to 2.3 meters, this lift provides you with the perfect solution.

Regardless of whether you move heavy loads or would like to expand your working range, our cab lift ensures flexibility, safety and efficiency.

ZERO EMISSION, BUT PROPERLY!

ADMITTEDLY, WE ARE A BIT PROUD. THE ATLAS 200MH ACCU IS THE TAILOR-MADE RESPONSE TO CUSTOMER REQUESTS AND FUTURE REQUIREMENTS. MANY YEARS OF PASSIONATE DEVELOPMENT WORK WENT INTO THIS POWER PACKAGE.

Our goal: Besides allowing for productivity increases, better environmental compatibility as well as superior safety, we aim to create a powerful and, at the same time, maneuverable construction machine in a compact format. With the ATLAS 200MH accu we achieved this! This means that we are again taking the lead for "standard tailor-made" solutions. F-LiBS 3.0 – the high-performance lithium-ion battery system for mobile applications such as utility vehicles, busses, self-propelled machines, and your e-mobility ideas. The highly integrated package ensures high power density at small dimensions.

The laser-welded bonding system as well as the integrated liquid-operated temperature control in combination with an active heating/cooling system allows for tough continuous operation in many applications. The module can be interconnected serial and parallel, thus allowing for a multitude of configurations, giving you the flexibility you need for your customers.

To the smallest detail, from boom to accessories, we think things through to the end. And these details are highly impressive!



UNOBSTRUCTED VIEW

// Cab with 360° panoramic view

The large-scale glazing of the cab with a very large front window, undivided side windowpanes and a low-slung rear window gives the driver an unobstructed 360° view of the working environment. Thus, the workplace becomes an ergonomic and safe area and facilitates precise operation. Elevated view is provided by the ATLAS cab lift.



// Rear view camera

The standard rear and side-view camera monitors the side and rear area. Especially during rotary motions of the machine, in particular in confined spaces, the camera provides enhanced safety.



// Easy to read camera display

A clearly arranged, uncluttered and easy to read camera display – without unnecessary details – provides superior view and control.

EASY ACCESS FOR SERVICE



// Maintenance-free and reduced service work



LIKE CLOCKWORK



// Central lubrication points
All necessary lubrication areas are easily accessible and clearly visible as well – so that service will also be fun in future.

EVERYTHING READY-TO-HAND



// Full power
With our powerful battery at the rear of the machine, you enjoy an impressive operating time of up to 4 hours without the need to recharge. This innovative technology allows you to work longer and more efficiently, without interruption for battery change or recharging.

STOWED WELL



// Tools always on board
In the toolbox on the undercarriage all kinds of tools are stowed ergonomically arranged for quick use on site.

EFFICIENT OPERATION



// Quickly recharged
Direct current DC charging quick charging station CCS
High charging power: 30 kW - 75 kW
Charging time: 60 min. to 86% (SoC).

FEEL. GOOD. CAB.

WELCOME TO ONE OF THE WORLD'S MOST COMFORTABLE WORKPLACES, WELCOME TO OUR CAB. WITH 360-DEGREE PANORAMIC VIEW, EASY TO READ APPLIANCES, LOW NOISE LEVEL, AND WELL-CONCEIVED VENTILATION AND ERGONOMICS CONCEPT.

Get on board, feel good, and get started! The driver's cab on the ATLAS 200MH accu, the maneuverable powerhouse, could make others jealous of one of the nicest workstations in the world.

Special emphasis is placed on clear arrangement, driver's health as well as comfortable usability. Via non-slip steps and a wide access, you enter the spacious cab. Here, the machine operator watches over the projects from a premium driver's seat!

The seat is ergonomically designed, made from premium materials, and available in various designs – individually adjustable of course, while the pneumatic suspension and lumbar support ensure a high level of seat comfort. Seat heating and headrest are a must as well!

From the seat, everything a driver needs for the job is within easy reach. Ranging from the adjustable control panel and the ergonomically formed joystick, all control levers and panels are within reach. The automatic climate control not only provides for cooling on hot workdays but also ensures supply of clean, dust-free air, and in wintertime is keeps warm. Via the display, temperature, fan and air-conditioning can easily be controlled.

All control instruments in this state-of-the-art and well-equipped cab are clearly arranged.

One also cannot too strongly emphasize the large-scale glazing for superior panoramic view. For a safe and good feeling. Throughout the full, sometimes long workday!





**YOUR WORKSTATION
OF TOMORROW.
ALREADY TODAY.**



// Multifunctional panel

Small, clearly arranged and made for quick access. The optimized design of the push buttons and switches helps to avoid mistakes.



// Air conditioning

Fresh air keeps the head fresh and the respiratory passages clear from dust! This is created by the well-thought-out ventilation system.



// Monitor with side and rear-view camera

The monitor ensures maximum safety thanks to a better view – in particular during rotary movements and operation in confined spaces.



// Smartphone tray with USB port

Life without smartphone? Inconceivable! In order to keep our digital all-rounder safe, it gets prominent place on the smartphone tray.



// Non-slip flooring

Always a firm grip underfoot, even when speed is of the essence: The non-slip flooring prevents the driver from slipping.



// Comfortable operation via joystick

Reduced to the essential elements for intuitive operation, the joystick moves ergonomically with the seat – and fits any hand.

Discover a new dimension of freedom of movement with our optional joystick steering that works without the conventional steering wheel. This innovative option allows you to steer your machine with effortless precision and, at the same time, maximize comfort and user friendliness.



// Bottle holder

With the bottle holder within comfortable reach, the thirst quencher is always close at hand and yet stowed well and safely!



// Cooler box

Perfect for between-meal snacks: the integrated cooler box with electrical hook-up keeps the day's provisions optimally stowed.



// Front window stowable

The lower part of the front window can be removed and easily stowed. This allows for uncomplicated and direct communication with, for example, the mate at work in the trench by simply calling out to them. In addition, it ensures an unrestricted view into the building pit.





BATTERY SYSTEM GEN 3



F-LiBS 3.0 – the high-performance lithium-ion battery system for mobile applications such as utility vehicles, busses, self-propelled machines, and your e-mobility ideas.

The highly integrated package ensures high power density at small dimensions. The laser-welded bonding system as well as the integrated liquid-operated temperature control in combination with an active heating/cooling system allows for tough continuous operation in many applications.

The module can be interconnected serial and parallel, thus allowing for a multitude of configurations, giving you the flexibility you need for your customers.

Cell technology Li-Ion NMC
Capacity (kWh) 115
Nominal voltage (V) 760
Operating temperatures (cell level)
0°C - 40°C charge
-30°C - + 55°C discharge
Thermal management water-glycol (heating/cooling)
Casing hybrid design, thermally insulated
IP protection class IP 67
Dimensions L x W x H (mm) 1315 x 688 x 160
Weight (kg) approx. 900 kg
Warranty 48 months
Certification UN 38.3, UL 1642, UL1972 Annex E

HYDRAULIC SYSTEM



Bosch Rexroth

The load-sensing hydraulic system ensures quick response times by providing maximum utilization of the available engine performance and yet, the Bosch Rexroth hydraulic system provides movements independent of the load via an electronically controlled pump and load-independent flow distribution (LUDV). This intelligent performance control ensures high flow distribution combined with proportional work functions.

For enhanced efficiency, the work speed can always be adjusted to the operating conditions – by freely selectable and adjustable work modes. For maximum operating performance, a power boost is available as well.

AXLES



ZF

The combination of frame, axles and transmission provides a perfect output of power at enhanced stability – due to the proven selection of quality products and the ideal positioning of the components. The robust frame structure ensures higher uptime and a long service life of the machine.

The heavy-duty axle design is excellently suited for driving across difficult terrain. The pendulum axle can be controlled automatically or connected manually.

SLEWING RING



Thyssen Krupp – Rothe Erde

Thanks to internal gearing and sealed ball bearings, the ball bearing slewing ring from Rothe Erde is an ideal and, at the same time, cost-effective solution.

The design is resistant to major torque fluctuations at all times.

ATTACHMENT TOOLS



ATLAS

ATLAS offers a wide range of attachment tools for the most diverse requirements – and this **from in-house production!**

This provides you with plenty of benefits:

Very wear-resistant – thanks to the use of high-tensile steels and a solid construction.

Maximum efficiency – all attachment tools are specifically designed for your excavator model and will fit perfectly.

Certified – according to the applicable safety standards

Guaranteed – with full warranty coverage and support

Added value – enhanced resale value

And apart from that: The use of high-quality attachment tools can help to reduce fuel consumption and emissions, which in turn sustainably preserves our environment.

Scan QR code to go directly to **attachment tools**:



TECHNICAL DATA

BATTERY-POWERED DRIVE SYSTEM

Battery (Li-ion) capacity	115 kW/h
Nominal voltage	760 V
Drive motor	140 kW/h
Fast charging capacity	DC direct current 50 – 150 kW/h
Option: Alternate current AC charge	11 kW/h
Battery performance	approx. 6 hours

HYDRAULIC SYSTEM

AWE 5 System (Load Sensing)	
Load-limit controlled high-performance pump	
Sensitive, proportional, independent control	
Primary and secondary protection against overload	
Suction valves for all work functions	
Break protection for lift and adjustment cylinders	
Proportional grab and grab rotating function	
Three additional circuits for auxiliary consumers possible	
Three additional circuits for auxiliary consumers possible	
max. 260 l/min flowrate	
max. 350 bar operating pressure	
Cylinder end position damping	
Operating modes	F1 (Fine) F2 (Eco) F3 (Power)
Accumulator for emergency lowering of the arm system	
Load-limit control	

SLEWING GEAR

Axial piston motor with priority valve	
Planetary transmission	
Automatically controlled multi-disc parking brake	
Two-stage valves	
Slewing torque	49 kNm
Upper structure rotation speed	8/min

TRAVEL DRIVE + BRAKES

Variable speed drive motor	
Powershift transmission	
Double-acting brake valve	
Travel direction pre-selection via switch on joystick	
Automotive traveling and cruise control	
Max. speed	16 km/h
Off-road speed	4 km/h
Crawling speed	3.5 km/h
Traction	92.7 kN
Gradeability	50 %
Dual-circuit brake system	multi-disc
Parking brake	multi-disc

UNDERCARRIAGE

Steering axle with automatic pendulum axle locking	
Additional axle locking via left joystick	
Heavy-duty axles	
Toolbox at undercarriage	
STD tires: Mitas 10.00-20 16PR EM23	

VIBRATION EMISSION *

Hand-arm-vibrations	< 2.5 m/s ²
Whole-body vibrations	< 0.5 m/s ²
Measurement uncertainty according to standard EN 12096:1997	

*For assessment of hazard exposure acc. to 2002/44/EG, see ISO/TR 25398:2006

DRIVER'S CAB

Meets the latest safety standard (ROPS)	
Extra-wide access	
Ample legroom	
Radio kit with mute function	
Installation kit for thermoelectric cooler	
Various storage options, document compartment	
Thermal insulating glazing, windows tinted	
Excellent panoramic view	
Driver's seat	Comfort seat with headrest
	Arm rests and lumbar support
Seat adjustable independent of console	
Air suspended	
Heated	
Horizontal and vertical suspension	
Lumbar support	
Control	Ergonomic joysticks with proportional slide
	Slim steering column with adjustable height and tilt
Switches neatly arranged on the control panel	
Pendulum axle locking on the left joystick	
Monitoring	Operating data indication via display
	Automatic monitoring, warning, and storage
Rear area monitoring camera	
Side-view camera, right-hand side	
Air-conditioning	automatic climate control
	Excellent air distribution due to optimally arranged nozzles
Refrigerant R134a	
Sound level	ISO 6396 (LpA) inside driver's cab: 69 dB(A)
	2000/14 EG (LwA) ambience level: 93 dB(A)

TIRES (OPTIONAL)

8-fold set of tires 10.00-20 16PR Nokian	
8-fold set of tires 10.00-20 16PR Tread for use on asphalt	
8-fold set of tires 10.00-20 Super-elastic (up to 16 km/h)	

FILLING QUANTITIES

Hydraulic tank capacity	180 liters
Hydraulic system capacity	350 liters

OPERATING WEIGHTS*

INDUSTRIAL BOOM 6.00 m (C6.6i)	
APS / STABILIZERS Stabilizers 4-fold	Stick 4.00 m 20.5 - 21.3 tons
	20.8 - 21.6 tons
INDUSTRIAL BOOM 5.5 m (C6.5i)	
APS / STABILIZERS Stabilizers 4-fold	Stick 4,5 m 20.7 - 21.5 t
	21.0 - 21.8 t
MONOBLOC BOOM 4.85 m (C6.4MG)	
APS / STABILIZERS Stabilizers 4-fold	Stick 3.2 m 20.6 - 21.4 t
	20.9 - 21.7 t

*Operating weight incl. driver, machine filled, and 1 ton for attachment tools

ATTACHMENT TOOLS (SELECTION)

Clamshell bucket	Load lifting magnet
Orange peel grab	Log grab
Load hook	Sorting grab



ACCESSORY EQUIPMENT

IT'S WORTH IT: OUR ATLAS ACCESSORY EQUIPMENT FOR EXTRA COST-EFFECTIVENESS AND SAFETY.

FOR MORE EFFICIENCY

- Rotating beacon
- Transmission protection
- Rockfall safety guard
- Hydraulic adapter kit,
Stabilizers can be operated for each axle separately
- Wheel cover
- Cab elevation
- Patented trailer hitch
- Bio-oil
- Widened axles (overall width 2,750 mm)
- Widened dozer blade (2,750 mm)

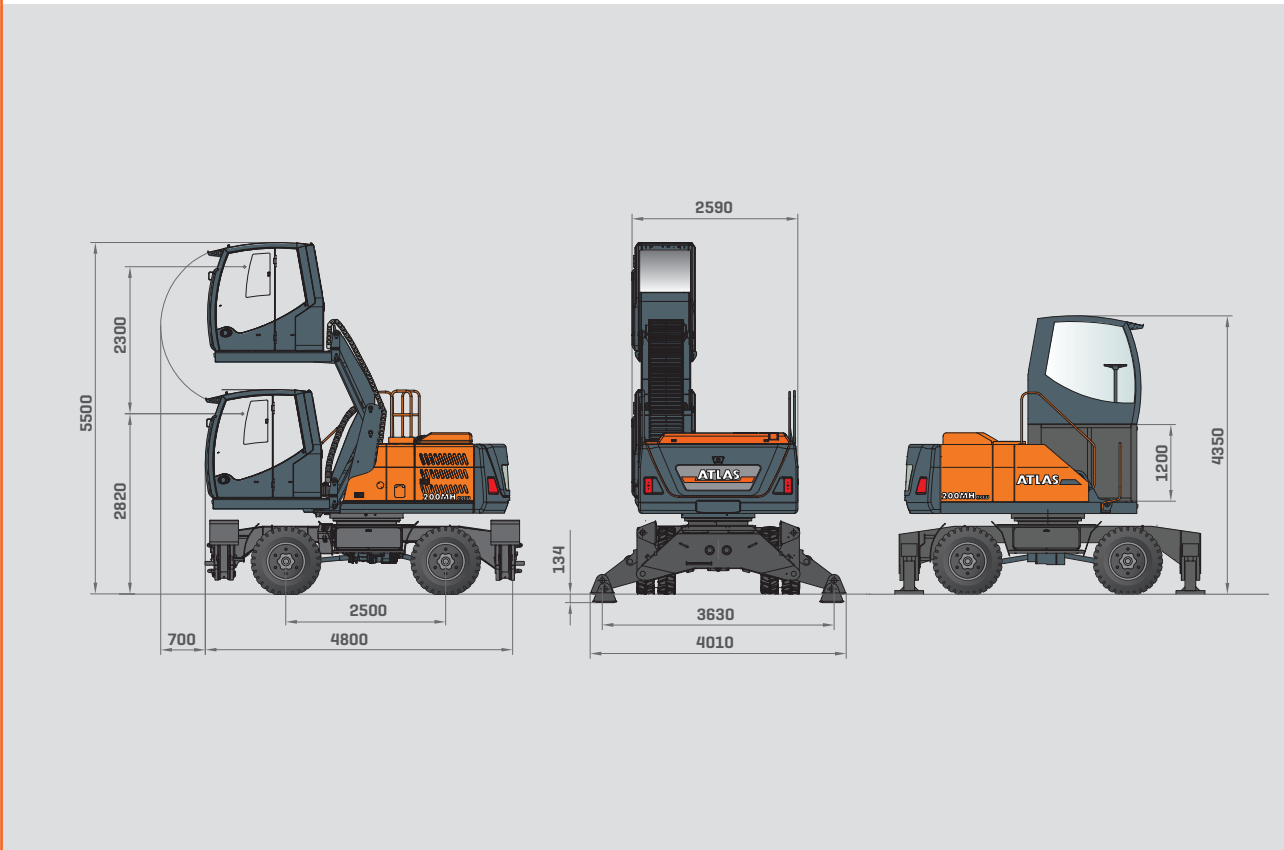
DRIVER'S COMFORT

- Proportional control of stabilizers via slider on joystick
- Synchronous electrical central lubrication system with monitoring function for upper carriage and boom equipment
- Joystick steering
- 270° camera system
- LED working lights
- 35 % axle differential lock
- Driver's seat Premium (Actimo Evolution)
- Electric cooler
- Radio with USB port and Bluetooth
- Buzzer alert for drive mode

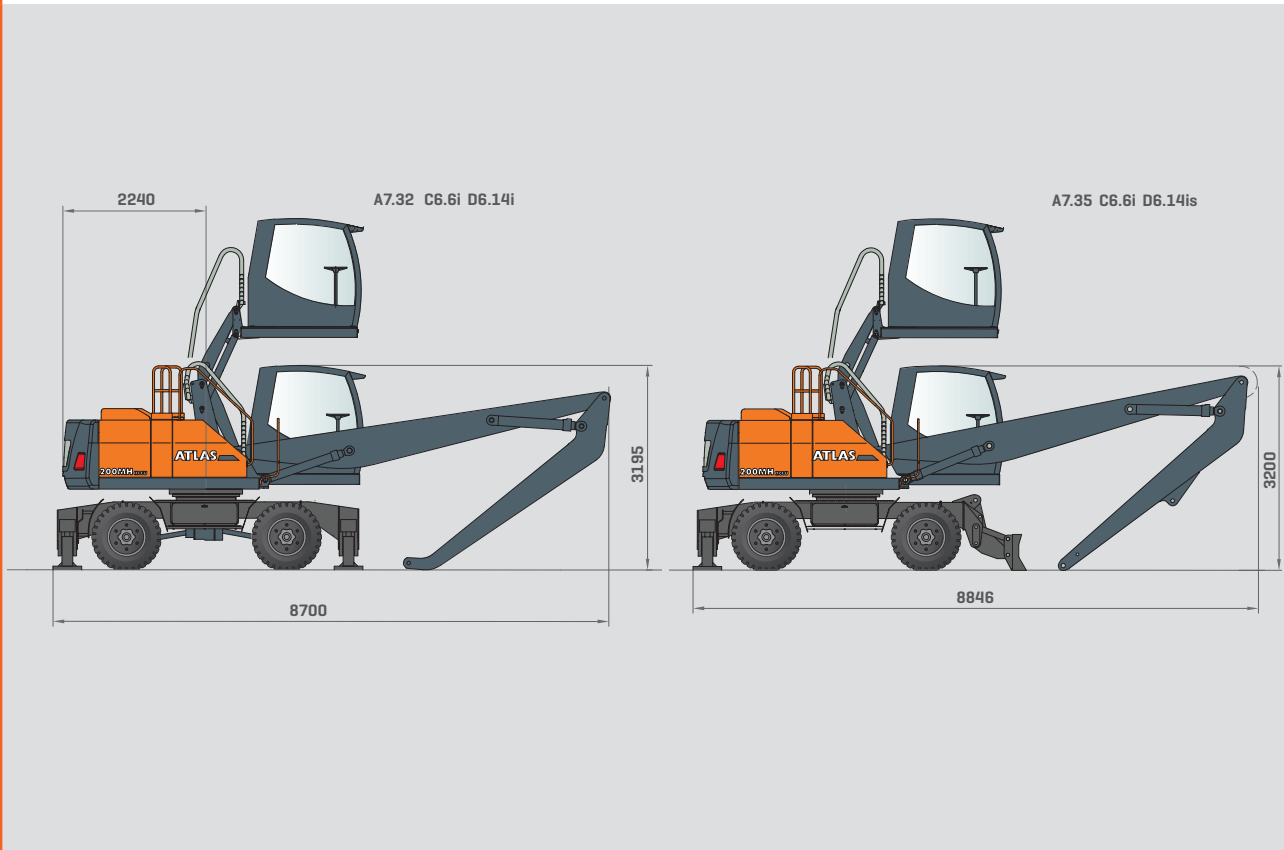
FOR ADDITIONAL ACCESSORY EQUIPMENT, SEE PRICE LIST

SPECIAL SOLUTIONS ON REQUEST

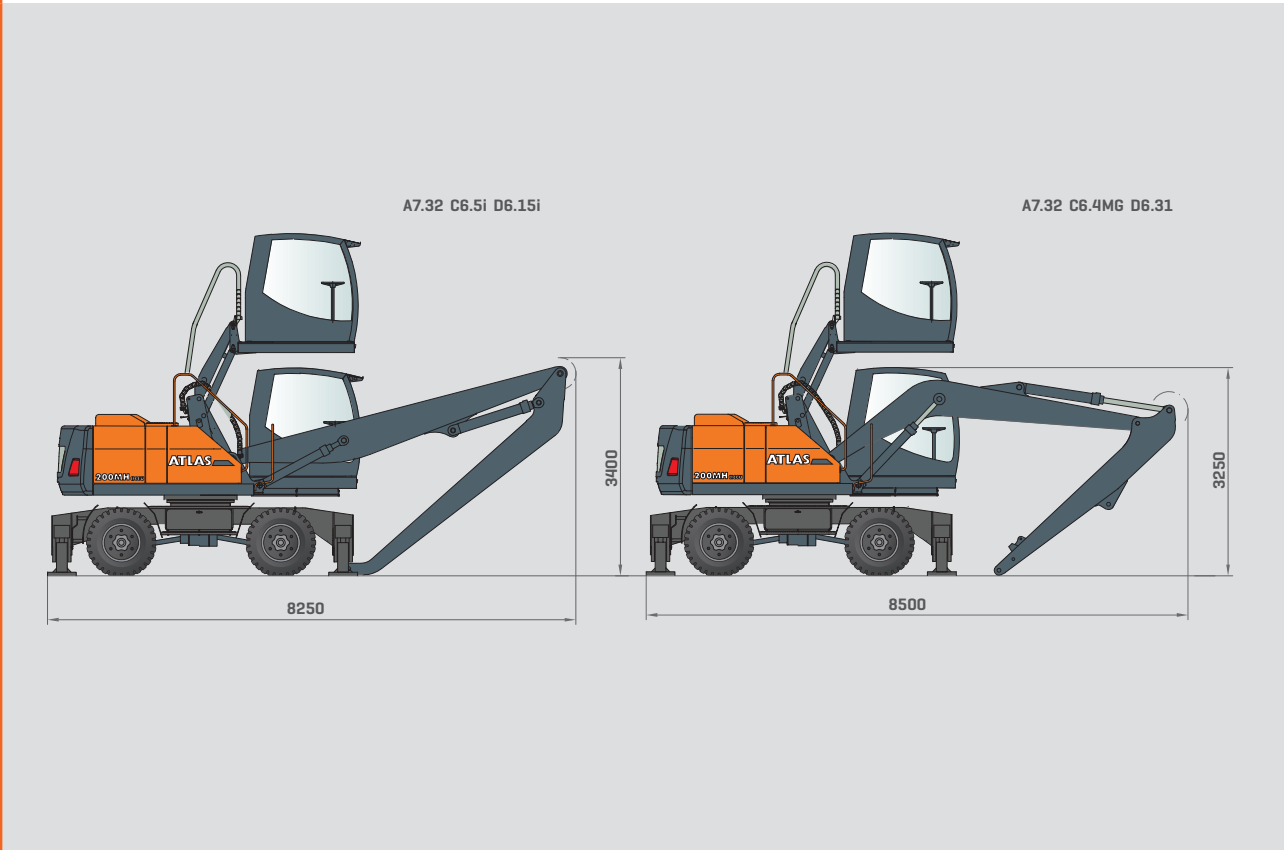
BASE MACHINE



TRANSPORT POSITION

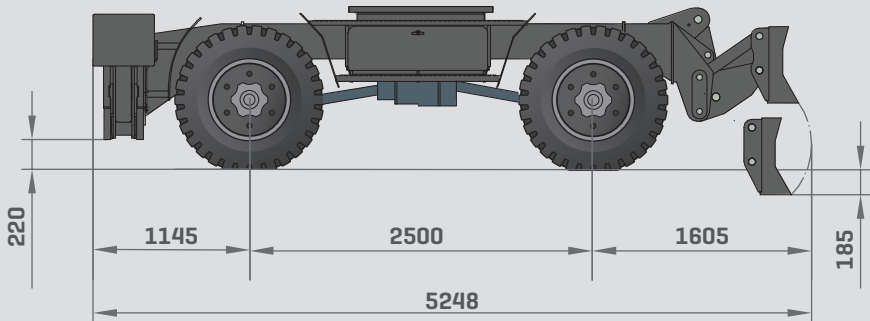


TRANSPORT POSITION

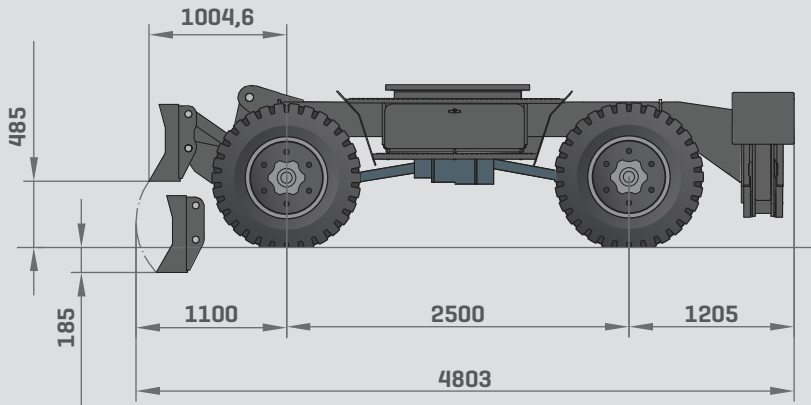


SUPPORTS

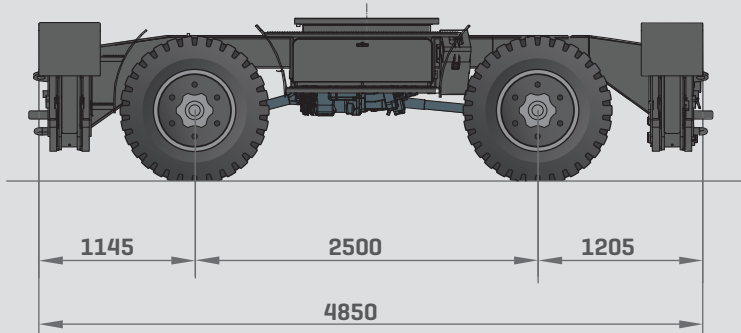
A7.35



A7.33

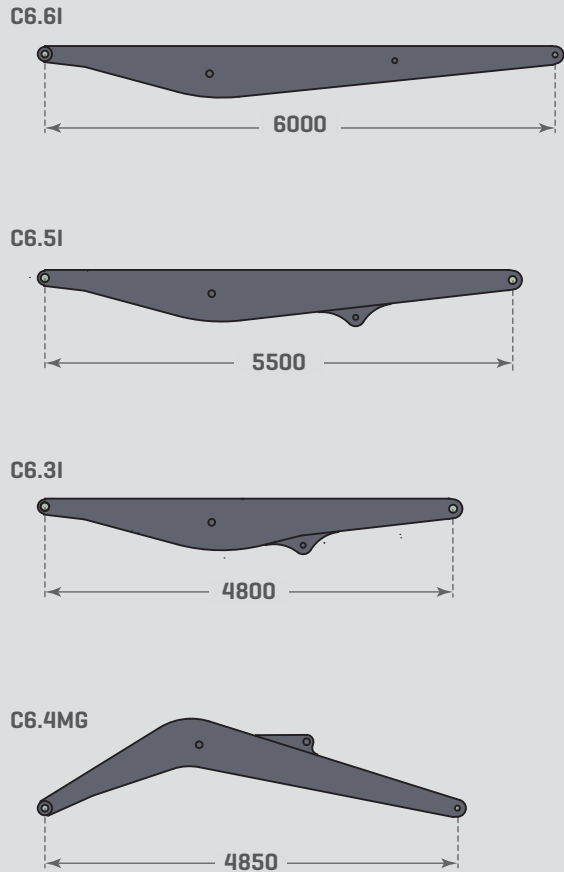


A7.32

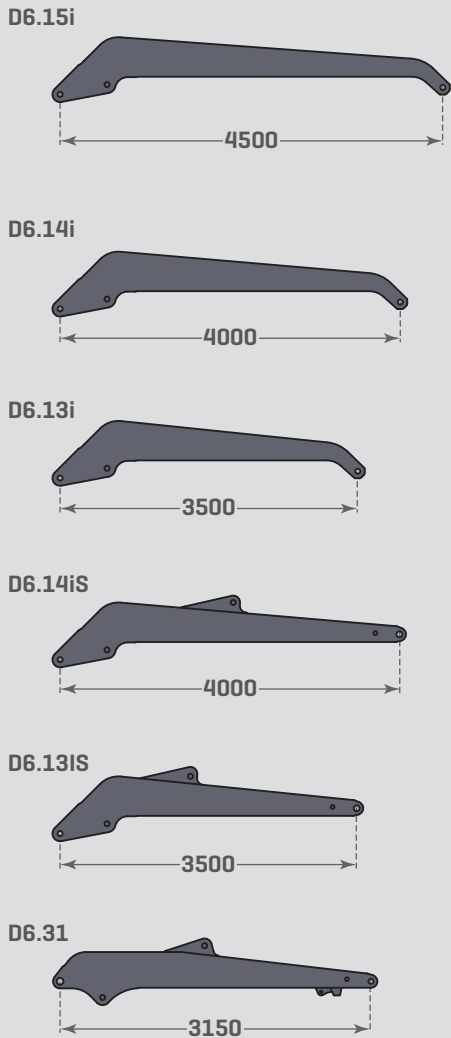


BOOMS & JIBS

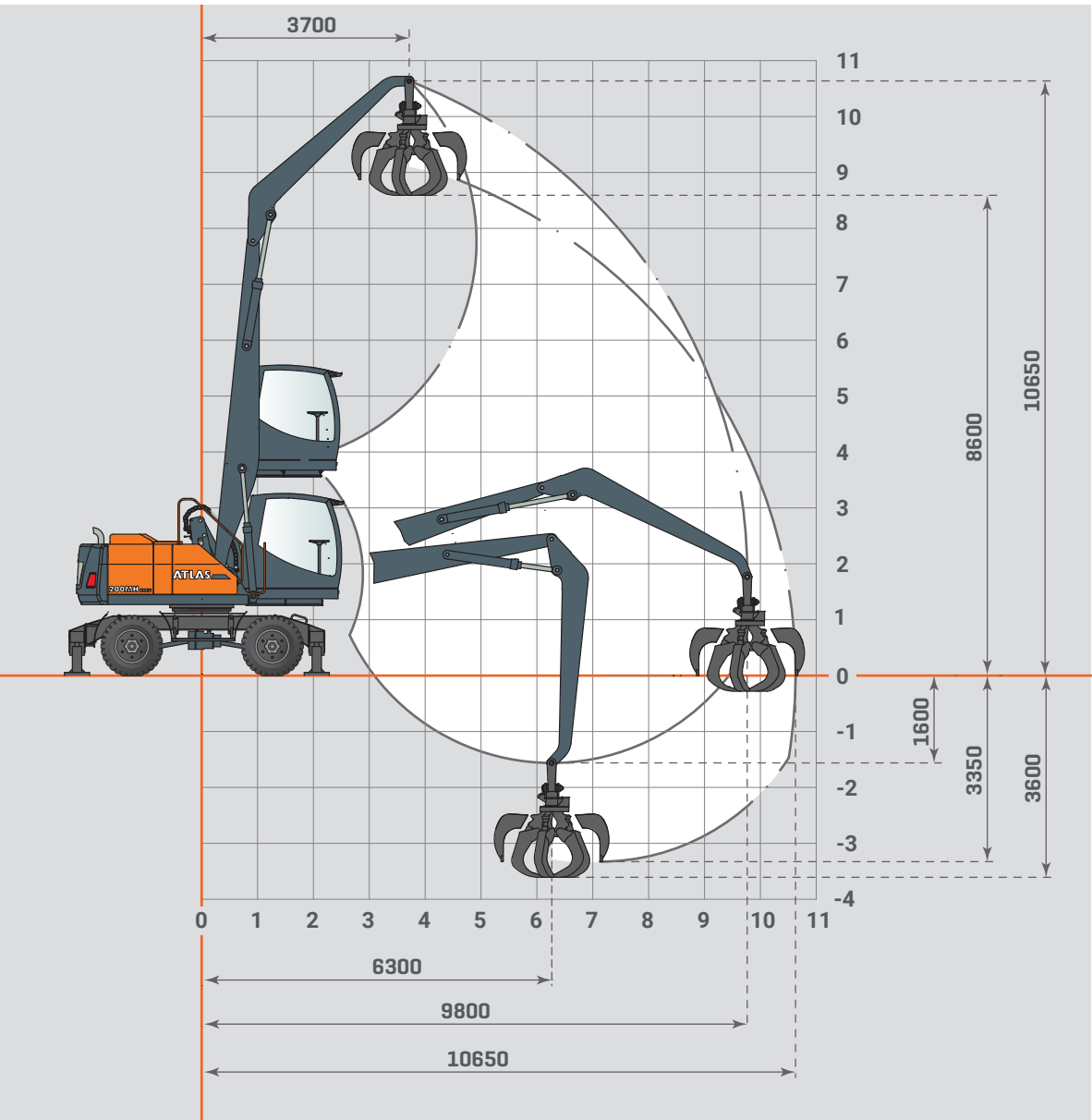
BOOMS



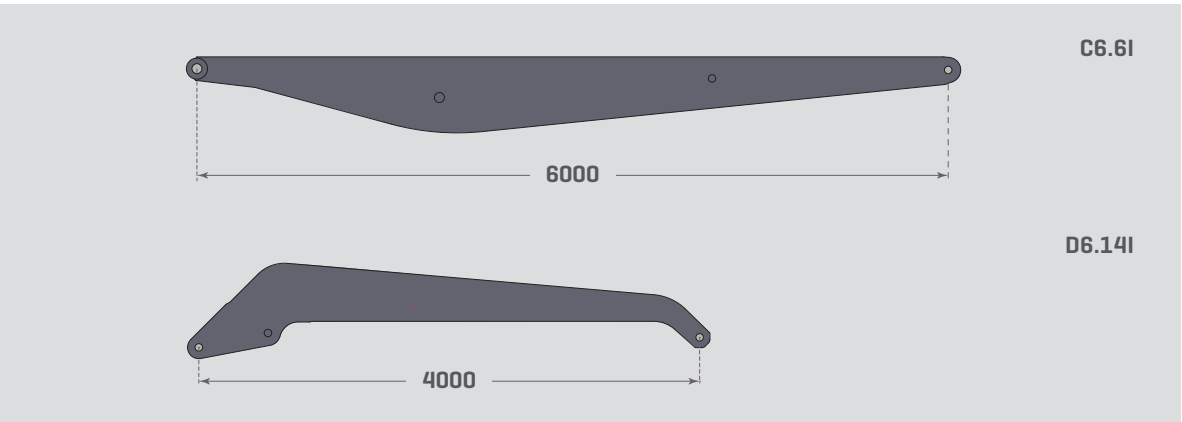
STICKS



INDUSTRIAL EQUIPMENT 9.5 M



INFO BOX



LOAD CAPACITY WITH BOOM C6.6I, ARTICULATED JIB D6.14I | AXLE 2.55 M

	Front	Rear	3 m			4 m			5 m			6 m			7 m			8 m		
			L	Q+	Q	L	Q+	Q	L	Q+	Q	L	Q+	Q	L	Q+	Q	L	Q+	Q
10 m	Blade	Stabilizer							4.9 *	4.9 *	4.5									
	Stabilizer	Stabilizer							4.9 *	4.9 *	4.6									
9 m	Blade	Stabilizer							5.7 *	5.7 *	4.7	4.9 *	4.9 *	3.5						
	Stabilizer	Stabilizer							5.7 *	5.7 *	4.7	4.9 *	4.9 *	3.5						
8 m	Blade	Stabilizer							5.6 *	5.6 *	4.7	4.8 *	4.8 *	3.5	4.2 *	4.2 *	2.7			
	Stabilizer	Stabilizer							5.6 *	5.6 *	4.7	4.8 *	4.8 *	3.6	4.2 *	4.2 *	2.7			
7 m	Blade	Stabilizer							5.6 *	5.6 *	4.7	4.8 *	4.8 *	3.5	4.2 *	4.2 *	2.7	3.7 *	3.7	2.2
	Stabilizer	Stabilizer							5.6 *	5.6 *	4.7	4.8 *	4.8 *	3.5	4.2 *	4.2 *	2.8	3.7 *	3.7 *	2.2
6 m	Blade	Stabilizer							5.7 *	5.7 *	4.6	4.9 *	4.9 *	3.5	4.2 *	4.2 *	2.7	3.7 *	3.7	2.2
	Stabilizer	Stabilizer							5.7 *	5.7 *	4.6	4.9 *	4.9 *	3.5	4.2 *	4.2 *	2.7	3.7 *	3.7 *	2.2
5 m	Blade	Stabilizer				7.2 *	7.2 *	6.3	5.9 *	5.9 *	4.5	5.0 *	5.0 *	3.4	4.3 *	4.3 *	2.7	3.7 *	3.6	2.2
	Stabilizer	Stabilizer				7.2 *	7.2 *	6.3	5.9 *	5.9 *	4.5	5.0 *	5.0 *	3.4	4.3 *	4.3 *	2.7	3.7 *	3.7 *	2.2
4 m	Blade	Stabilizer	10.3 *	10.3 *	9.4	7.6 *	7.6 *	6.0	6.1 *	6.1 *	4.3	5.0 *	5.0 *	3.3	4.3 *	4.3 *	2.6	3.6 *	3.6	2.1
	Stabilizer	Stabilizer	10.3 *	10.3 *	9.5	7.6 *	7.6 *	6.0	6.1 *	6.1 *	4.3	5.0 *	5.0 *	3.3	4.3 *	4.3 *	2.6	3.6 *	3.6 *	2.1
3 m	Blade	Stabilizer	11.1 *	11.1 *	8.6	8.0 *	8.0 *	5.6	6.2 *	6.2 *	4.1	5.1 *	5.1 *	3.1	4.2 *	4.2 *	2.5	3.6 *	3.5	2.1
	Stabilizer	Stabilizer	11.1 *	11.1 *	8.6	8.0 *	8.0 *	5.6	6.2 *	6.2 *	4.1	5.1 *	5.1 *	3.2	4.2 *	4.2 *	2.5	3.6 *	3.6 *	2.1
2 m	Blade	Stabilizer	10.8 *	10.8 *	7.7	7.9 *	7.9 *	5.2	6.1 *	6.1 *	3.8	5.0 *	5.0 *	3.0	4.1 *	4.1 *	2.4	3.4 *	3.4 *	2.0
	Stabilizer	Stabilizer	10.8 *	10.8 *	7.8	7.9 *	7.9 *	5.3	6.1 *	6.1 *	3.9	5.0 *	5.0 *	3.0	4.1 *	4.1 *	2.4	3.4 *	3.4 *	2.0
1 m	Blade	Stabilizer	8.9 *	8.9 *	7.3	7.4 *	7.4 *	4.9	5.8 *	5.8 *	3.7	4.7 *	4.7 *	2.9	3.9 *	3.9 *	2.3	3.2 *	3.2 *	2.0
	Stabilizer	Stabilizer	8.9 *	8.9 *	7.4	7.4 *	7.4 *	5.0	5.8 *	5.8 *	3.7	4.7 *	4.7 *	2.9	3.9 *	3.9 *	2.4	3.2 *	3.2 *	2.0
0 m	Blade	Stabilizer				6.2 *	6.2 *	4.8	5.2 *	5.2 *	3.6	4.3 *	4.3 *	2.8	3.5 *	3.5 *	2.3	2.9 *	2.9 *	1.9
	Stabilizer	Stabilizer				6.2 *	6.2 *	4.8	5.2 *	5.2 *	3.6	4.3 *	4.3 *	2.8	3.5 *	3.5 *	2.3	2.9 *	2.9 *	1.9
-1 m	Blade	Stabilizer							4.2 *	4.2 *	3.5	3.6 *	3.6 *	2.8	2.9 *	2.9 *	2.3	2.3 *	2.3 *	1.9
	Stabilizer	Stabilizer							4.2 *	4.2 *	3.5	3.6 *	3.6 *	2.8	2.9 *	2.9 *	2.3	2.3 *	2.3 *	1.9

LOAD CAPACITY WITH BOOM C6.6I, ARTICULATED JIB D6.14I | AXLE 2.75 M

	Front	Rear	3 m			4 m			5 m			6 m			7 m			8 m		
			L	Q+	Q	L	Q+	Q	L	Q+	Q	L	Q+	Q	L	Q+	Q	L	Q+	Q
10 m	Blade	Stabilizer							4.9 *	4.9 *	4.9 *									
	Stabilizer	Stabilizer							4.9 *	4.9 *	4.9 *									
9 m	Blade	Stabilizer							5.7 *	5.7 *	5.2	4.9 *	4.9 *	3.9						
	Stabilizer	Stabilizer							5.7 *	5.7 *	5.2	4.9 *	4.9 *	3.9						
8 m	Blade	Stabilizer							5.6 *	5.6 *	5.2	4.8 *	4.8 *	3.9	4.2 *	4.2 *	3.0			
	Stabilizer	Stabilizer							5.6 *	5.6 *	5.2	4.8 *	4.8 *	3.9	4.2 *	4.2 *	3.0			
7 m	Blade	Stabilizer							5.6 *	5.6 *	5.2	4.8 *	4.8 *	3.9	4.2 *	4.2 *	3.0	3.7 *	3.7	2.4
	Stabilizer	Stabilizer							5.6 *	5.6 *	5.2	4.8 *	4.8 *	3.9	4.2 *	4.2 *	3.1	3.7 *	3.7 *	2.5
6 m	Blade	Stabilizer							5.7 *	5.7 *	5.1	4.9 *	4.9 *	3.8	4.2 *	4.2 *	3.0	3.7 *	3.7	2.4
	Stabilizer	Stabilizer							5.7 *	5.7 *	5.1	4.9 *	4.9 *	3.9	4.2 *	4.2 *	3.0	3.7 *	3.7 *	2.5
5 m	Blade	Stabilizer				7.2 *	7.2 *	7.0	5.9 *	5.9 *	5.0	5.0 *	5.0 *	3.8	4.3 *	4.3 *	3.0	3.7 *	3.6	2.4
	Stabilizer	Stabilizer				7.2 *	7.2 *	7.1	5.9 *	5.9 *	5.0	5.0 *	5.0 *	3.8	4.3 *	4.3 *	3.0	3.7 *	3.7 *	2.4
4 m	Blade	Stabilizer	10.3 *	10.3 *	10.3 *	7.6 *	7.6 *	6.7	6.1 *	6.1 *	4.8	5.0 *	5.0 *	3.6	4.3 *	4.3 *	2.9	3.6 *	3.6	2.4
	Stabilizer	Stabilizer	10.3 *	10.3 *	10.3 *	7.6 *	7.6 *	6.8	6.1 *	6.1 *	4.8	5.0 *	5.0 *	3.7	4.3 *	4.3 *	2.9	3.6 *	3.6 *	2.4
3 m	Blade	Stabilizer	11.1 *	11.1 *	9.8	8.0 *	8.0 *	6.3	6.2 *	6.2 *	4.6	5.1 *	5.1 *	3.5	4.2 *	4.2 *	2.8	3.6 *	3.5	2.3
	Stabilizer	Stabilizer	11.1 *	11.1 *	9.9	8.0 *	8.0 *	6.4	6.2 *	6.2 *	4.6	5.1 *	5.1 *	3.5	4.2 *	4.2 *	2.8	3.6 *	3.6 *	2.3
2 m	Blade	Stabilizer	10.8 *	10.8 *	8.9	7.9 *	7.9 *	5.9	6.1 *	6.1 *	4.3	5.0 *	5.0 *	3.4	4.1 *	4.1 *	2.7	3.4 *	3.4 *	2.2
	Stabilizer	Stabilizer	10.8 *	10.8 *	9.0	7.9 *	7.9 *	6.0	6.1 *	6.1 *	4.3	5.0 *	5.0 *	3.4	4.1 *	4.1 *	2.7	3.4 *	3.4 *	2.3
1 m	Blade	Stabilizer	8.9 *	8.9 *	8.5	7.4 *	7.4 *	5.6	5.8 *	5.8 *	4.2	4.7 *	4.7 *	3.3	3.9 *	3.9 *	2.6	3.2 *	3.2 *	2.2
	Stabilizer	Stabilizer	8.9 *	8.9 *	8.6	7.4 *	7.4 *	5.7	5.8 *	5.8 *	4.2	4.7 *	4.7 *	3.3	3.9 *	3.9 *	2.7	3.2 *	3.2 *	2.2
0 m	Blade	Stabilizer				6.2 *	6.2 *	5.5	5.2 *	5.2 *	4.0	4.3 *	4.3 *	3.2	3.5 *	3.5 *	2.6	2.9 *	2.9 *	2.2
	Stabilizer	Stabilizer				6.2 *	6.2 *	5.5	5.2 *	5.2 *	4.1	4.3 *	4.3 *	3.2	3.5 *	3.5 *	2.6	2.9 *	2.9 *	2.2
-1 m	Blade	Stabilizer							4.2 *	4.2 *	4.0	3.6 *	3.6 *	3.1	2.9 *	2.9 *	2.5	2.3 *	2.3 *	2.1
	Stabilizer	Stabilizer							4.2 *	4.2 *	4.0	3.6 *	3.6 *	3.2	2.9 *	2.9 *	2.6	2.3 *	2.3 *	2.2



L = longitudinally unsupported



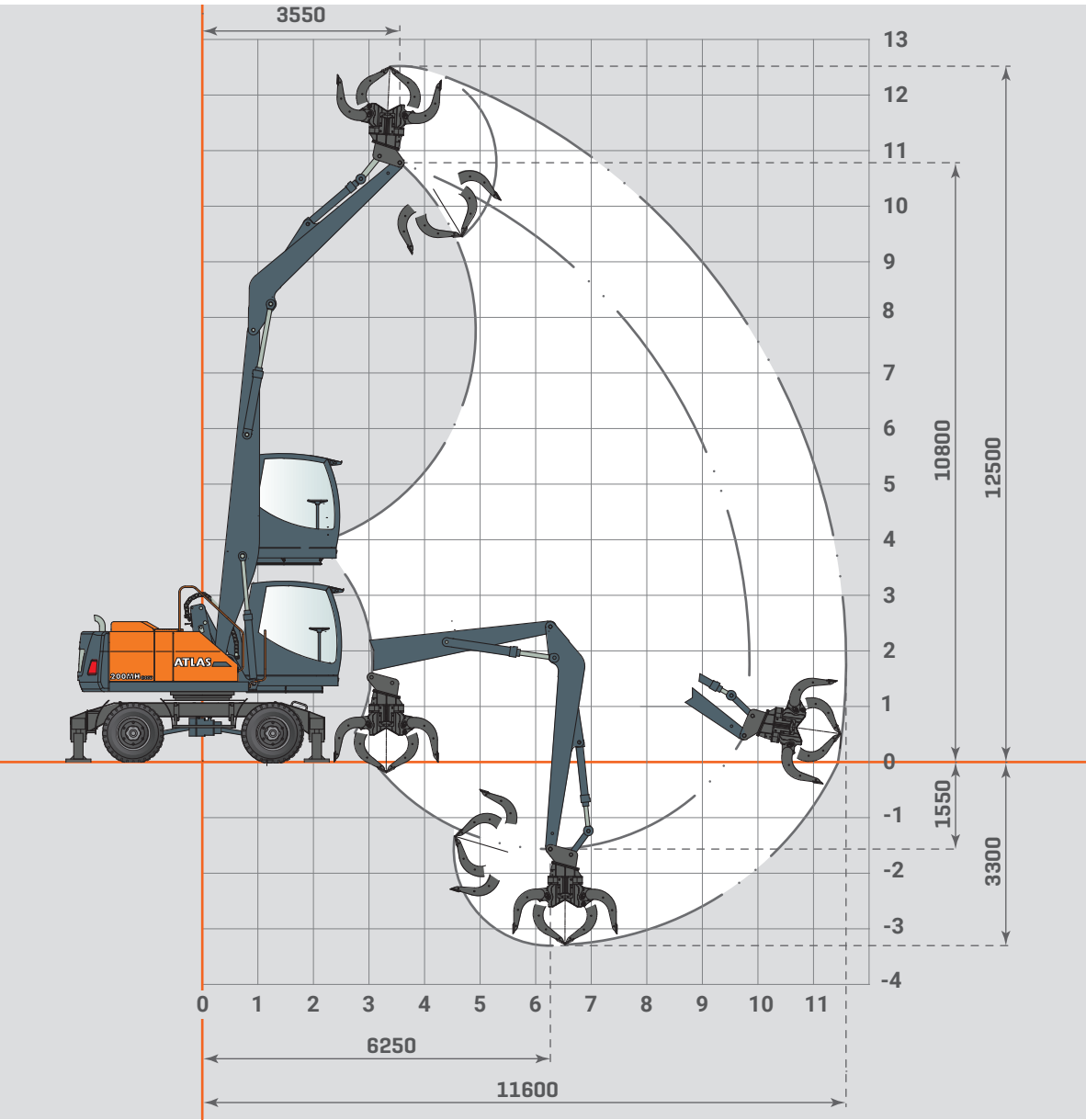
Q+ = laterally supported



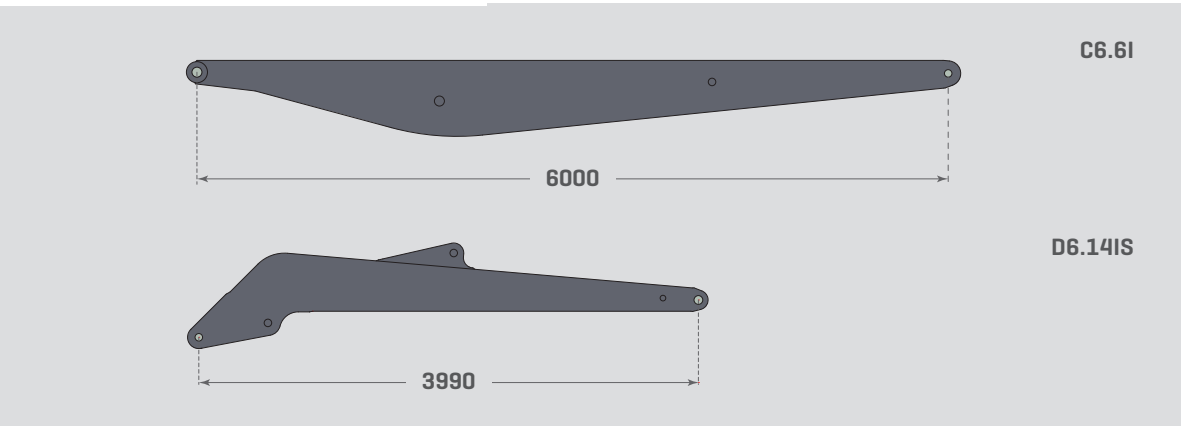
Q = laterally unsupported

Lift capacities in tons (T) at the articulated jib end, without bucket tipping cylinder, without tool. Values on level ground, locked pendulum axle, and pressure switched on. Values laterally to the undercarriage apply throughout 360° rotatable. The values Laterally 1) apply supported. The values longitudinally to the undercarriage apply supported across the rigid axle as well as unsupported across the steering axle. The indicated load values are stated according to ISO 10567, imply a stability of 25% and are calculated at 87% of the maximum hydraulic lifting capacity. An asterisk (*) marks the values that are limited by hydraulic lifting capacity.

INDUSTRIAL EQUIPMENT 9.5 M



INFO BOX



LOAD CAPACITY WITH BOOM C6.6I, ARTICULATED JIB D6.14IS | AXLE 2.55 M

	Front	Rear	3 m			4 m			5 m			6 m			7 m			8 m		
			L	Q+	Q	L	Q+	Q	L	Q+	Q	L	Q+	Q	L	Q+	Q	L	Q+	Q
10 m	Blade	Stabilizer							5.5 *	5.5 *	4.5									
	Stabilizer	Stabilizer							5.5 *	5.5 *	4.6									
9 m	Blade	Stabilizer							5.7 *	5.7 *	4.7	4.9 *	4.9 *	3.5						
	Stabilizer	Stabilizer							5.7 *	5.7 *	4.7	4.9 *	4.9 *	3.5						
8 m	Blade	Stabilizer							5.6 *	5.6 *	4.7	4.8 *	4.8 *	3.5	4.2 *	4.2 *	2.7			
	Stabilizer	Stabilizer							5.6 *	5.6 *	4.7	4.8 *	4.8 *	3.6	4.2 *	4.2 *	2.7			
7 m	Blade	Stabilizer							5.6 *	5.6 *	4.7	4.8 *	4.8 *	3.5	4.2 *	4.2 *	2.7	3.7 *	3.7	2.2
	Stabilizer	Stabilizer							5.6 *	5.6 *	4.7	4.8 *	4.8 *	3.5	4.2 *	4.2 *	2.8	3.7 *	3.7 *	2.2
6 m	Blade	Stabilizer							5.7 *	5.7 *	4.6	4.9 *	4.9 *	3.5	4.2 *	4.2 *	2.7	3.7 *	3.7	2.2
	Stabilizer	Stabilizer							5.7 *	5.7 *	4.6	4.9 *	4.9 *	3.5	4.2 *	4.2 *	2.7	3.7 *	3.7 *	2.2
5 m	Blade	Stabilizer				7.3 *	7.3 *	6.3	5.9 *	5.9 *	4.5	4.9 *	4.9 *	3.4	4.3 *	4.3 *	2.7	3.7 *	3.6	2.2
	Stabilizer	Stabilizer				7.3 *	7.3 *	6.4	5.9 *	5.9 *	4.5	4.9 *	4.9 *	3.4	4.3 *	4.3 *	2.7	3.7 *	3.7 *	2.2
4 m	Blade	Stabilizer	10.3 *	10.3 *	9.5	7.6 *	7.6 *	6.0	6.1 *	6.1 *	4.3	5.0 *	5.0 *	3.3	4.3 *	4.3 *	2.6	3.7 *	3.6	2.1
	Stabilizer	Stabilizer	10.3 *	10.3 *	9.5	7.6 *	7.6 *	6.0	6.1 *	6.1 *	4.3	5.0 *	5.0 *	3.3	4.3 *	4.3 *	2.6	3.7 *	3.7 *	2.1
3 m	Blade	Stabilizer	11.1 *	11.1 *	8.6	8.0 *	8.0 *	5.6	6.2 *	6.2 *	4.1	5.1 *	5.1 *	3.1	4.3 *	4.3 *	2.5	3.6 *	3.5	2.1
	Stabilizer	Stabilizer	11.1 *	11.1 *	8.7	8.0 *	8.0 *	5.7	6.2 *	6.2 *	4.1	5.1 *	5.1 *	3.2	4.3 *	4.3 *	2.5	3.6 *	3.6 *	2.1
2 m	Blade	Stabilizer	10.5 *	10.5 *	7.5	7.9 *	7.9 *	5.2	6.2 *	6.2 *	3.9	5.0 *	5.0 *	3.0	4.1 *	4.1 *	2.4	3.5 *	3.5 *	2.0
	Stabilizer	Stabilizer	10.5 *	10.5 *	7.5	7.9 *	7.9 *	5.3	6.2 *	6.2 *	3.9	5.0 *	5.0 *	3.0	4.1 *	4.1 *	2.5	3.5 *	3.5 *	2.0
1 m	Blade	Stabilizer	9.0 *	9.0 *	7.4	7.3 *	7.3 *	4.9	5.8 *	5.8 *	3.7	4.7 *	4.7 *	2.9	3.9 *	3.9 *	2.3	3.2 *	3.2 *	2.0
	Stabilizer	Stabilizer	9.0 *	9.0 *	7.4	7.3 *	7.3 *	5.0	5.8 *	5.8 *	3.7	4.7 *	4.7 *	2.9	3.9 *	3.9 *	2.4	3.2 *	3.2 *	2.0
0 m	Blade	Stabilizer				6.2 *	6.2 *	4.8	5.2 *	5.2 *	3.6	4.3 *	4.3 *	2.8	3.5 *	3.5 *	2.3	2.9 *	2.9 *	1.9
	Stabilizer	Stabilizer				6.2 *	6.2 *	4.8	5.2 *	5.2 *	3.6	4.3 *	4.3 *	2.8	3.5 *	3.5 *	2.3	2.9 *	2.9 *	1.9
-1 m	Blade	Stabilizer							4.2 *	4.2 *	3.5	3.6 *	3.6 *	2.8	3.0 *	3.0 *	2.3	2.3 *	2.3 *	1.9
	Stabilizer	Stabilizer							4.2 *	4.2 *	3.5	3.6 *	3.6 *	2.8	3.0 *	3.0 *	2.3	2.3 *	2.3 *	1.9

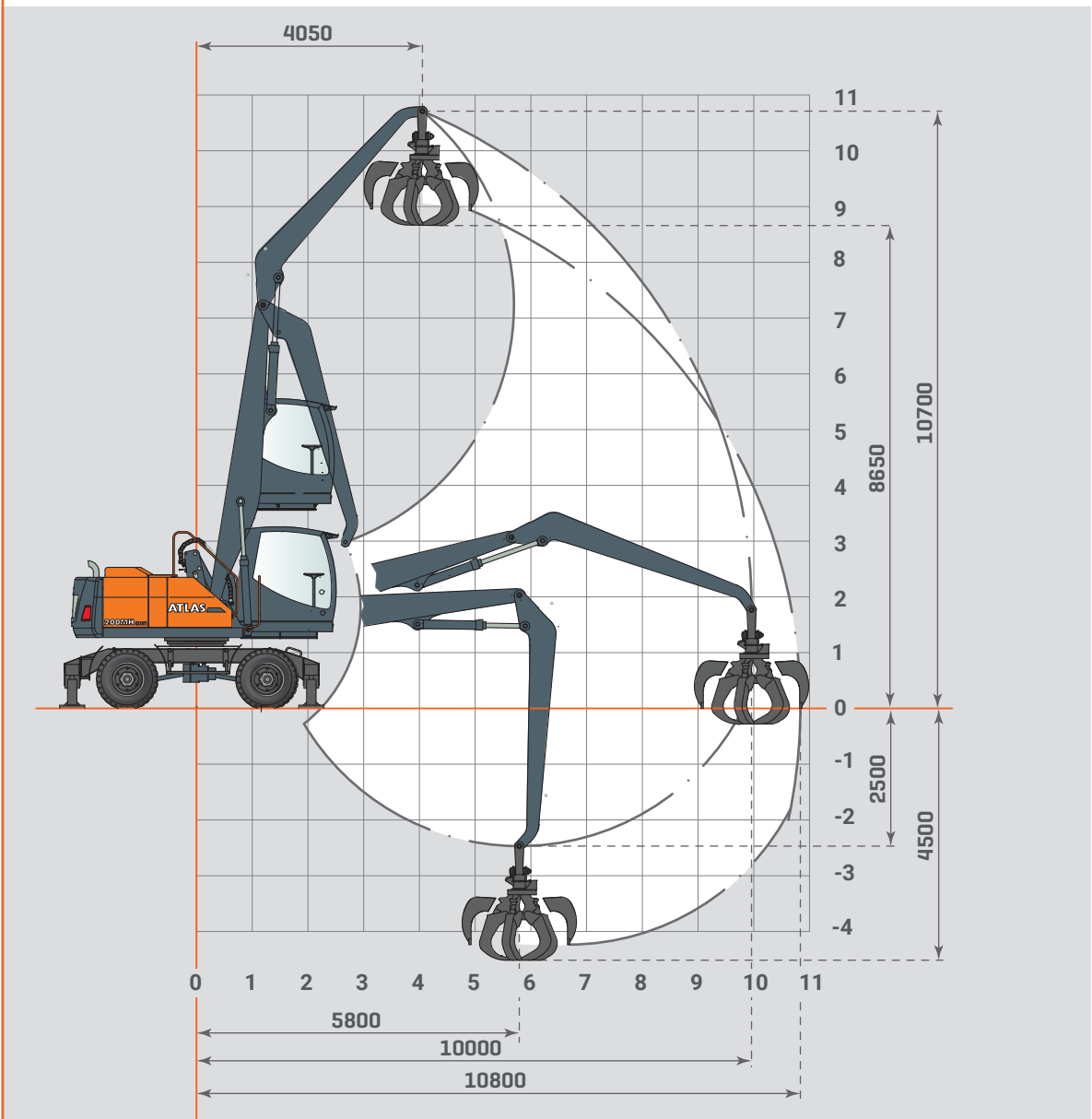
LOAD CAPACITY WITH BOOM C6.6I, ARTICULATED JIB D6.14IS | AXLE 2.75 M

	Front	Rear	3 m			4 m			5 m			6 m			7 m			8 m		
			L	Q+	Q	L	Q+	Q	L	Q+	Q	L	Q+	Q	L	Q+	Q	L	Q+	Q
10 m	Blade	Stabilizer							5.5 *	5.5 *	5.0									
	Stabilizer	Stabilizer							5.5 *	5.5 *	5.1									
9 m	Blade	Stabilizer							5.7 *	5.7 *	5.2	4.9 *	4.9 *	3.9						
	Stabilizer	Stabilizer							5.7 *	5.7 *	5.2	4.9 *	4.9 *	3.9						
8 m	Blade	Stabilizer							5.6 *	5.6 *	5.2	4.8 *	4.8 *	3.9	4.2 *	4.2 *	3.0			
	Stabilizer	Stabilizer							5.6 *	5.6 *	5.2	4.8 *	4.8 *	3.9	4.2 *	4.2 *	3.1			
7 m	Blade	Stabilizer							5.6 *	5.6 *	5.2	4.8 *	4.8 *	3.9	4.2 *	4.2 *	3.0	3.7 *	3.7	2.4
	Stabilizer	Stabilizer							5.6 *	5.6 *	5.2	4.8 *	4.8 *	3.9	4.2 *	4.2 *	3.1	3.7 *	3.7 *	2.5
6 m	Blade	Stabilizer							5.7 *	5.7 *	5.1	4.9 *	4.9 *	3.8	4.2 *	4.2 *	3.0	3.7 *	3.7	2.4
	Stabilizer	Stabilizer							5.7 *	5.7 *	5.1	4.9 *	4.9 *	3.9	4.2 *	4.2 *	3.0	3.7 *	3.7 *	2.5
5 m	Blade	Stabilizer				7.3 *	7.3 *	7.1	5.9 *	5.9 *	5.0	4.9 *	4.9 *	3.7	4.3 *	4.3 *	3.0	3.7 *	3.6	2.4
	Stabilizer	Stabilizer				7.3 *	7.3 *	7.1	5.9 *	5.9 *	5.0	4.9 *	4.9 *	3.8	4.3 *	4.3 *	3.0	3.7 *	3.7 *	2.4
4 m	Blade	Stabilizer	10.3 *	10.3 *	10.3 *	7.6 *	7.6 *	6.7	6.1 *	6.1 *	4.8	5.0 *	5.0 *	3.6	4.3 *	4.3 *	2.9	3.7 *	3.6	2.4
	Stabilizer	Stabilizer	10.3 *	10.3 *	10.3 *	7.6 *	7.6 *	6.7	6.1 *	6.1 *	4.8	5.0 *	5.0 *	3.7	4.3 *	4.3 *	2.9	3.7 *	3.7 *	2.4
3 m	Blade	Stabilizer	11.1 *	11.1 *	9.9	8.0 *	8.0 *	6.3	6.2 *	6.2 *	4.6	5.1 *	5.1 *	3.5	4.3 *	4.3 *	2.8	3.6 *	3.5	2.3
	Stabilizer	Stabilizer	11.1 *	11.1 *	9.9	8.0 *	8.0 *	6.4	6.2 *	6.2 *	4.6	5.1 *	5.1 *	3.5	4.3 *	4.3 *	2.8	3.6 *	3.6 *	2.3
2 m	Blade	Stabilizer	10.5 *	10.5 *	8.6	7.9 *	7.9 *	5.9	6.2 *	6.2 *	4.3	5.0 *	5.0 *	3.4	4.1 *	4.1 *	2.7	3.5 *	3.5 *	2.3
	Stabilizer	Stabilizer	10.5 *	10.5 *	8.7	7.9 *	7.9 *	6.0	6.2 *	6.2 *	4.4	5.0 *	5.0 *	3.4	4.1 *	4.1 *	2.8	3.5 *	3.5 *	2.3
1 m	Blade	Stabilizer	9.0 *	9.0 *	8.6	7.3 *	7.3 *	5.6	5.8 *	5.8 *	4.1	4.7 *	4.7 *	3.2	3.9 *	3.9 *	2.6	3.2 *	3.2 *	2.2
	Stabilizer	Stabilizer	9.0 *	9.0 *	8.7	7.3 *	7.3 *	5.7	5.8 *	5.8 *	4.2	4.7 *	4.7 *	3.3	3.9 *	3.9 *	2.7	3.2 *	3.2 *	2.2
0 m	Blade	Stabilizer				6.2 *	6.2 *	5.5	5.2 *	5.2 *	4.0	4.3 *	4.3 *	3.2	3.5 *	3.5 *	2.6	2.9 *	2.9 *	2.2
	Stabilizer	Stabilizer				6.2 *	6.2 *	5.5	5.2 *	5.2 *	4.1	4.3 *	4.3 *	3.2	3.5 *	3.5 *	2.6	2.9 *	2.9 *	2.2
-1 m	Blade	Stabilizer							4.2 *	4.2 *	4.0	3.6 *	3.6 *	3.1	3.0 *	3.0 *	2.6	2.3 *	2.3 *	2.1
	Stabilizer	Stabilizer							4.2 *	4.2 *	4.0	3.6 *	3.6 *	3.2	3.0 *	3.0 *	2.6	2.3 *	2.3 *	2.2

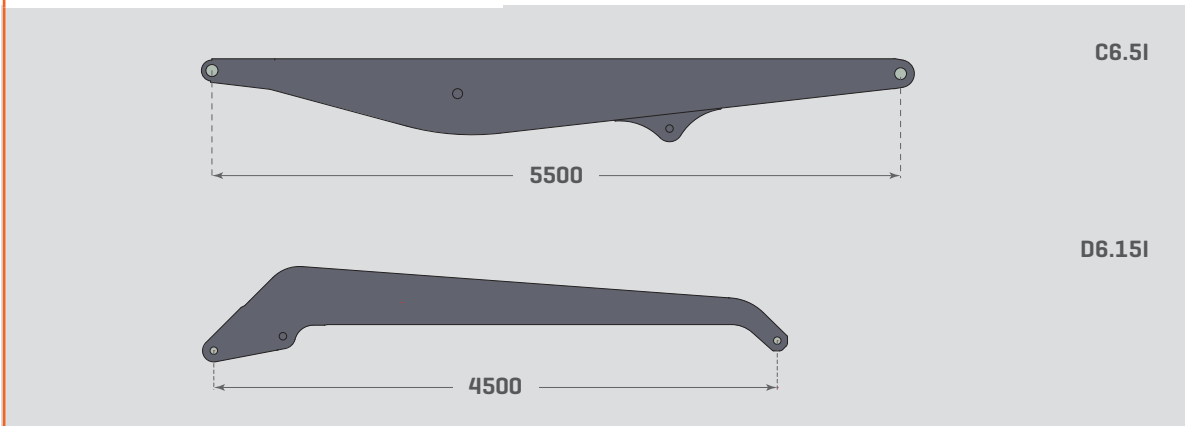
Lift capacities in tons (T) at the articulated jib end, without bucket tipping cylinder, without tool. Values on level ground, locked pendulum axle, and pressure switched on. Values laterally to the undercarriage apply throughout 360° rotatable. The values Laterally 1) apply supported. The values longitudinally to the undercarriage apply supported across the rigid axle as well as unsupported across the steering axle. The indicated load values are stated according to ISO 10567. Imply a stability of 25% and are calculated at 87% of the maximum hydraulic lifting capacity. An asterisk (*) marks the values that are limited by hydraulic lifting capacity.



INDUSTRIAL EQUIPMENT 9.7 M



INFO BOX



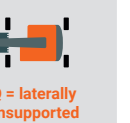
LOAD CAPACITY WITH BOOM C6.5I, ARTICULATED JIB D6.15I | AXLE 2.55 M

			3.5 m			4.5 m			5.5 m			6.5 m			7.5 m			8.5 m		
			L	Q+	Q	L	Q+	Q	L	Q+	Q	L	Q+	Q	L	Q+	Q	L	Q+	Q
9 m	Blade	Stabilizer							5.2 *	5.2 *	4.1	4.6 *	4.6 *	3.1						
	Stabilizer	Stabilizer							5.2 *	5.2 *	4.1	4.6 *	4.6 *	3.1						
8 m	Blade	Stabilizer										4.5 *	4.5 *	3.2	4.0 *	4.0 *	2.5			
	Stabilizer	Stabilizer										4.5 *	4.5 *	3.2	4.0 *	4.0 *	2.5			
7 m	Blade	Stabilizer										4.4 *	4.4 *	3.2	3.9 *	3.9 *	2.5			
	Stabilizer	Stabilizer										4.4 *	4.4 *	3.2	3.9 *	3.9 *	2.5			
6 m	Blade	Stabilizer										4.4 *	4.4 *	3.1	3.9 *	3.9 *	2.5	3.5 *	3.4	2.0
	Stabilizer	Stabilizer										4.4 *	4.4 *	3.2	3.9 *	3.9 *	2.5	3.5 *	3.5 *	2.0
5 m	Blade	Stabilizer							5.2 *	5.2 *	4.0	4.5 *	4.5 *	3.1	4.0 *	4.0 *	2.5	3.4 *	3.3	2.0
	Stabilizer	Stabilizer							5.2 *	5.2 *	4.0	4.5 *	4.5 *	3.1	4.0 *	4.0 *	2.5	3.4 *	3.4 *	2.0
4 m	Blade	Stabilizer				6.4 *	6.4 *	5.3	5.4 *	5.4 *	3.9	4.6 *	4.6 *	3.0	4.0 *	4.0 *	2.4	3.4 *	3.3	2.0
	Stabilizer	Stabilizer				6.4 *	6.4 *	5.3	5.4 *	5.4 *	3.9	4.6 *	4.6 *	3.0	4.0 *	4.0 *	2.4	3.4 *	3.4 *	2.0
3 m	Blade	Stabilizer	8.7 *	8.7 *	7.4	6.8 *	6.8 *	5.0	5.5 *	5.5 *	3.8	4.7 *	4.7 *	2.9	4.0 *	4.0 *	2.4	3.4 *	3.3	1.9
	Stabilizer	Stabilizer	8.7 *	8.7 *	7.4	6.8 *	6.8 *	5.1	5.5 *	5.5 *	3.8	4.7 *	4.7 *	3.0	4.0 *	4.0 *	2.4	3.4 *	3.4 *	2.0
2 m	Blade	Stabilizer	9.3 *	9.3 *	6.9	7.0 *	7.0 *	4.7	5.6 *	5.6 *	3.6	4.7 *	4.7 *	2.8	3.9 *	3.9	2.3	3.3 *	3.2	1.9
	Stabilizer	Stabilizer	9.3 *	9.3 *	6.9	7.0 *	7.0 *	4.8	5.6 *	5.6 *	3.6	4.7 *	4.7 *	2.9	3.9 *	3.9 *	2.3	3.3 *	3.3 *	1.9
1 m	Blade	Stabilizer	9.3 *	9.3 *	6.3	7.0 *	7.0 *	4.5	5.6 *	5.6 *	3.4	4.5 *	4.5 *	2.7	3.8 *	3.8 *	2.2	3.1 *	3.1 *	1.9
	Stabilizer	Stabilizer	9.3 *	9.3 *	6.4	7.0 *	7.0 *	4.5	5.6 *	5.6 *	3.4	4.5 *	4.5 *	2.7	3.8 *	3.8 *	2.2	3.1 *	3.1 *	1.9
0 m	Blade	Stabilizer	8.5 *	8.5 *	6.0	6.6 *	6.6 *	4.3	5.2 *	5.2 *	3.3	4.3 *	4.3 *	2.6	3.5 *	3.5 *	2.2	2.8 *	2.8 *	1.8
	Stabilizer	Stabilizer	8.5 *	8.5 *	6.1	6.6 *	6.6 *	4.3	5.2 *	5.2 *	3.3	4.3 *	4.3 *	2.6	3.5 *	3.5 *	2.2	2.8 *	2.8 *	1.8
-1 m	Blade	Stabilizer	7.1 *	7.1 *	5.9	5.7 *	5.7 *	4.2	4.6 *	4.6 *	3.2	3.8 *	3.8 *	2.6	3.1 *	3.1 *	2.1	2.3 *	2.3 *	1.8
	Stabilizer	Stabilizer	7.1 *	7.1 *	6.0	5.7 *	5.7 *	4.2	4.6 *	4.6 *	3.2	3.8 *	3.8 *	2.6	3.1 *	3.1 *	2.1	2.3 *	2.3 *	1.8
-2 m	Blade	Stabilizer				4.5 *	4.5 *	4.1	3.8 *	3.8 *	3.1	3.1 *	3.1 *	2.5	2.4 *	2.4 *	2.1			
	Stabilizer	Stabilizer				4.5 *	4.5 *	4.1	3.8 *	3.8 *	3.2	3.1 *	3.1 *	2.6	2.4 *	2.4 *	2.1			

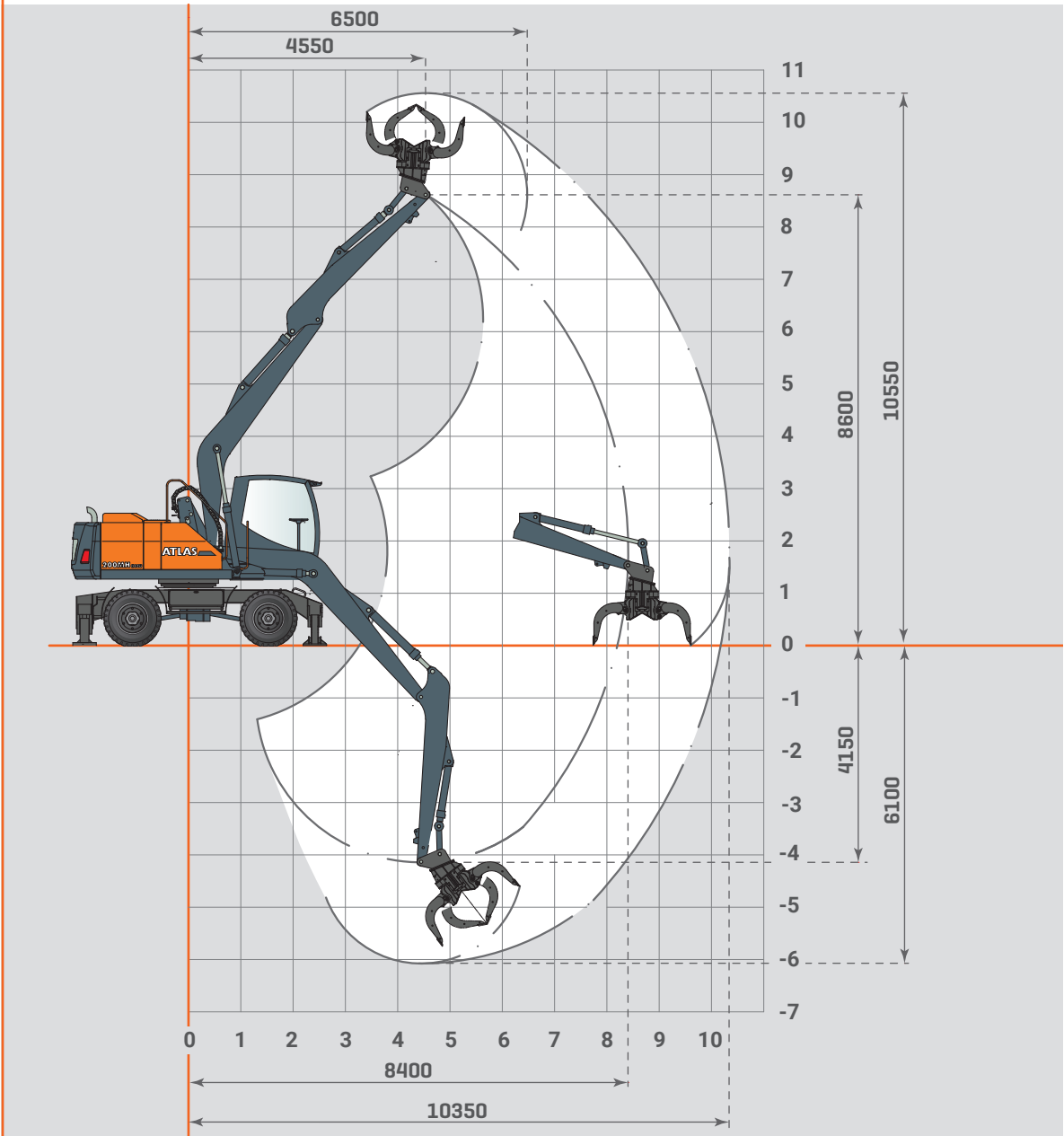
LOAD CAPACITY WITH BOOM C6.5I, ARTICULATED JIB D6.15I | AXLE 2.75 M

			3.5 m			4.5 m			5.5 m			6.5 m			7.5 m			8.5 m		
			L	Q+	Q	L	Q+	Q	L	Q+	Q	L	Q+	Q	L	Q+	Q	L	Q+	Q
9 m	Blade	Stabilizer							5.2 *	5.2 *	4.5	4.6 *	4.6 *	3.4						
	Stabilizer	Stabilizer							5.2 *	5.2 *	4.5	4.6 *	4.6 *	3.5						
8 m	Blade	Stabilizer										4.5 *	4.5 *	3.5	4.0 *	4.0 *	2.8			
	Stabilizer	Stabilizer										4.5 *	4.5 *	3.5	4.0 *	4.0 *	2.8			
7 m	Blade	Stabilizer										4.4 *	4.4 *	3.5	3.9 *	3.9 *	2.8			
	Stabilizer	Stabilizer										4.4 *	4.4 *	3.5	3.9 *	3.9 *	2.8			
6 m	Blade	Stabilizer										4.4 *	4.4 *	3.5	3.9 *	3.9 *	2.8	3.5 *	3.4	2.3
	Stabilizer	Stabilizer										4.4 *	4.4 *	3.5	3.9 *	3.9 *	2.8	3.5 *	3.5 *	2.3
5 m	Blade	Stabilizer							5.2 *	5.2 *	4.5	4.5 *	4.5 *	3.4	4.0 *	4.0 *	2.8	3.4 *	3.4	2.2
	Stabilizer	Stabilizer							5.2 *	5.2 *	4.5	4.5 *	4.5 *	3.5	4.0 *	4.0 *	2.8	3.4 *	3.4 *	2.3
4 m	Blade	Stabilizer				6.4 *	6.4 *	5.9	5.4 *	5.4 *	4.3	4.6 *	4.6 *	3.4	4.0 *	4.0 *	2.7	3.4 *	3.3	2.2
	Stabilizer	Stabilizer				6.4 *	6.4 *	5.9	5.4 *	5.4 *	4.4	4.6 *	4.6 *	3.4	4.0 *	4.0 *	2.7	3.4 *	3.4 *	2.2
3 m	Blade	Stabilizer	8.7 *	8.7 *	8.3	6.8 *	6.8 *	5.6	5.5 *	5.5 *	4.2	4.7 *	4.7 *	3.3	4.0 *	4.0	2.6	3.4 *	3.3	2.2
	Stabilizer	Stabilizer	8.7 *	8.7 *	8.4	6.8 *	6.8 *	5.7	5.5 *	5.5 *	4.2	4.7 *	4.7 *	3.3	4.0 *	4.0 *	2.6	3.4 *	3.4 *	2.2
2 m	Blade	Stabilizer	9.3 *	9.3 *	7.8	7.0 *	7.0 *	5.3	5.6 *	5.6 *	4.0	4.7 *	4.7 *	3.2	3.9 *	3.9	2.5	3.3 *	3.3	2.1
	Stabilizer	Stabilizer	9.3 *	9.3 *	7.8	7.0 *	7.0 *	5.3	5.6 *	5.6 *	4.0	4.7 *	4.7 *	3.2	3.9 *	3.9 *	2.6	3.3 *	3.3 *	2.2
1 m	Blade	Stabilizer	9.3 *	9.3 *	7.2	7.0 *	7.0 *	5.0	5.6 *	5.6 *	3.8	4.5 *	4.5 *	3.0	3.8 *	3.8 *	2.5	3.1 *	3.1 *	2.1
	Stabilizer	Stabilizer	9.3 *	9.3 *	7.3	7.0 *	7.0 *	5.1	5.6 *	5.6 *	3.9	4.5 *	4.5 *	3.1	3.8 *	3.8 *	2.5	3.1 *	3.1 *	2.1
0 m	Blade	Stabilizer	8.5 *	8.5 *	6.9	6.6 *	6.6 *	4.9	5.2 *	5.2 *	3.7	4.3 *	4.3 *	2.9	3.5 *	3.5 *	2.4	2.8 *	2.8 *	2.1
	Stabilizer	Stabilizer	8.5 *	8.5 *	7.0	6.6 *	6.6 *	4.9	5.2 *	5.2 *	3.7	4.3 *	4.3 *	3.0	3.5 *	3.5 *	2.5	2.8 *	2.8 *	2.1
-1 m	Blade	Stabilizer	7.1 *	7.1 *	6.8	5.7 *	5.7 *	4.7	4.6 *	4.6 *	3.6	3.8 *	3.8 *	2.9	3.1 *	3.1 *	2.4	2.3 *	2.3 *	2.0
	Stabilizer	Stabilizer	7.1 *	7.1 *	6.8	5.7 *	5.7 *	4.8	4.6 *	4.6 *	3.6	3.8 *	3.8 *	2.9	3.1 *	3.1 *	2.4	2.3 *	2.3 *	2.0
-2 m	Blade	Stabilizer				4.5 *	4.5 *	4.5 *	3.8 *	3.8 *	3.6	3.1 *	3.1 *	2.9	2.4 *	2.4 *	2.4			
	Stabilizer	Stabilizer				4.5 *	4.5 *	4.5 *	3.8 *	3.8 *	3.6	3.1 *	3.1 *	2.9	2.4 *	2.4 *	2.4 *			

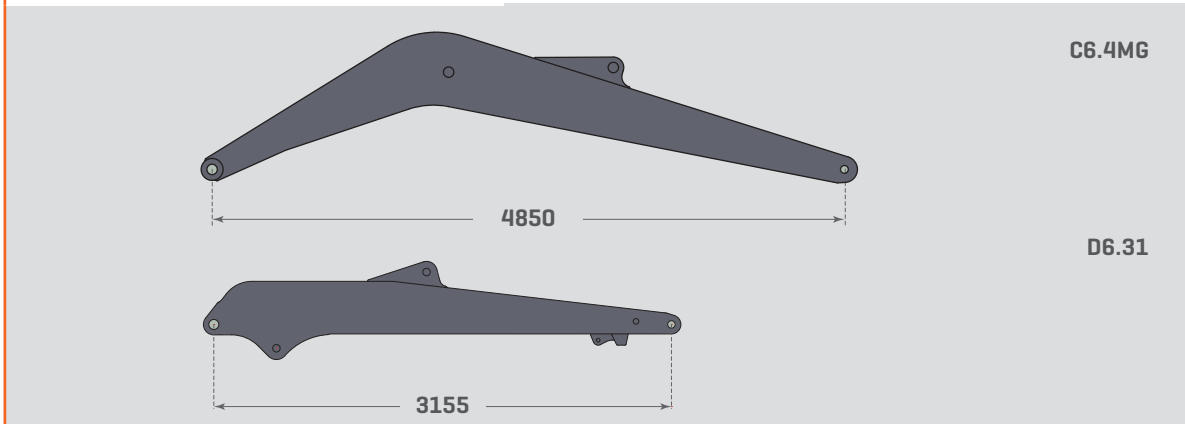
Lift capacities in tons (T) at the articulated jib end, without bucket tipping cylinder, without tool. Values on level ground, locked pendulum axle, and pressure switched on. Values laterally to the undercarriage apply throughout 360° rotatable. The values Laterally 1) apply supported. The values longitudinally to the undercarriage apply supported across the rigid axle as well as unsupported across the steering axle. The indicated load values are stated according to ISO 10567. imply a stability of 25% and are calculated at 87% of the maximum hydraulic lifting capacity. An asterisk (*) marks the values that are limited by hydraulic lifting capacity.



INDUSTRIAL EQUIPMENT 7.9 M



INFO BOX



LOAD CAPACITY WITH BOOM C6.4MG, ARTICULATED JIB D6.31 | AXLE 2.55 M

	Front	Rear	3 m			4 m			5 m			6 m			7 m			8 m		
			L	Q+	Q	L	Q+	Q	L	Q+	Q	L	Q+	Q	L	Q+	Q	L	Q+	Q
8 m	Blade	Stabilizer							3.3 *	3.3 *	3.3 *									
	Stabilizer	Stabilizer							3.3 *	3.3 *	3.3 *									
7 m	Blade	Stabilizer										3.7 *	3.7 *	3.5						
	Stabilizer	Stabilizer										3.7 *	3.7 *	3.5						
6 m	Blade	Stabilizer										4.2 *	4.2 *	3.6	2.5 *	2.5 *	2.5 *			
	Stabilizer	Stabilizer										4.2 *	4.2 *	3.6	2.5 *	2.5 *	2.5 *			
5 m	Blade	Stabilizer										4.2 *	4.2 *	3.5	3.9 *	3.9 *	2.7			
	Stabilizer	Stabilizer										4.2 *	4.2 *	3.6	3.9 *	3.9 *	2.8			
4 m	Blade	Stabilizer							4.9 *	4.9 *	4.5	4.4 *	4.4 *	3.5	4.0 *	4.0 *	2.7			
	Stabilizer	Stabilizer							4.9 *	4.9 *	4.6	4.4 *	4.4 *	3.5	4.0 *	4.0 *	2.7			
3 m	Blade	Stabilizer				6.6 *	6.6 *	6.0	5.4 *	5.4 *	4.4	4.6 *	4.6 *	3.3	4.1 *	4.1 *	2.7	3.2 *	3.2 *	2.2
	Stabilizer	Stabilizer				6.6 *	6.6 *	6.1	5.4 *	5.4 *	4.4	4.6 *	4.6 *	3.4	4.1 *	4.1 *	2.7	3.2 *	3.2 *	2.2
2 m	Blade	Stabilizer				7.3 *	7.3 *	5.6	5.8 *	5.8 *	4.1	4.9 *	4.9 *	3.2	4.2 *	4.2 *	2.6	3.7 *	3.6	2.2
	Stabilizer	Stabilizer				7.3 *	7.3 *	5.7	5.8 *	5.8 *	4.2	4.9 *	4.9 *	3.3	4.2 *	4.2 *	2.6	3.7 *	3.7 *	2.2
1 m	Blade	Stabilizer				7.9 *	7.9 *	5.4	6.1 *	6.1 *	4.0	5.0 *	5.0 *	3.1	4.3 *	4.3 *	2.6	3.7 *	3.6	2.1
	Stabilizer	Stabilizer				7.9 *	7.9 *	5.4	6.1 *	6.1 *	4.0	5.0 *	5.0 *	3.2	4.3 *	4.3 *	2.6	3.7 *	3.7 *	2.2
0 m	Blade	Stabilizer	7.1 *	7.1 *	7.1 *	8.0 *	8.0 *	5.2	6.2 *	6.2 *	3.9	5.1 *	5.1 *	3.1	4.3 *	4.3 *	2.5	2.8 *	2.8 *	2.1
	Stabilizer	Stabilizer	7.1 *	7.1 *	7.1 *	8.0 *	8.0 *	5.3	6.2 *	6.2 *	3.9	5.1 *	5.1 *	3.1	4.3 *	4.3 *	2.5	2.8 *	2.8 *	2.1
-1 m	Blade	Stabilizer	8.8 *	8.8 *	7.8	7.7 *	7.7 *	5.1	6.0 *	6.0 *	3.8	4.9 *	4.9 *	3.0	4.0 *	4.0 *	2.5			
	Stabilizer	Stabilizer	8.8 *	8.8 *	7.9	7.7 *	7.7 *	5.2	6.0 *	6.0 *	3.9	4.9 *	4.9 *	3.1	4.0 *	4.0 *	2.5			
-2 m	Blade	Stabilizer	8.8 *	8.8 *	7.9	6.9 *	6.9 *	5.2	5.6 *	5.6 *	3.8	4.5 *	4.5 *	3.0	3.4 *	3.4 *	2.5			
	Stabilizer	Stabilizer	8.8 *	8.8 *	8.0	6.9 *	6.9 *	5.2	5.6 *	5.6 *	3.9	4.5 *	4.5 *	3.1	3.4 *	3.4 *	2.5			
-3 m	Blade	Stabilizer							4.6 *	4.6 *	3.9									
	Stabilizer	Stabilizer							4.6 *	4.6 *	3.9									

LOAD CAPACITY WITH BOOM C6.4MG, ARTICULATED JIB D6.31 | AXLE 2.75 M

	Front	Rear	3 m			4 m			5 m			6 m			7 m			8 m		
			L	Q+	Q	L	Q+	Q	L	Q+	Q	L	Q+	Q	L	Q+	Q	L	Q+	Q
8 m	Blade	Stabilizer							3.3 *	3.3 *	3.3 *									
	Stabilizer	Stabilizer							3.3 *	3.3 *	3.3 *									
7 m	Blade	Stabilizer										3.7 *	3.7 *	3.7 *						
	Stabilizer	Stabilizer										3.7 *	3.7 *	3.7 *						
6 m	Blade	Stabilizer										4.2 *	4.2 *	3.9	2.5 *	2.5 *	2.5 *			
	Stabilizer	Stabilizer										4.2 *	4.2 *	4.0	2.5 *	2.5 *	2.5 *			
5 m	Blade	Stabilizer										4.2 *	4.2 *	3.9	3.9 *	3.9 *	3.0			
	Stabilizer	Stabilizer										4.2 *	4.2 *	3.9	3.9 *	3.9 *	3.1			
4 m	Blade	Stabilizer							4.9 *	4.9 *	4.9 *	4.4 *	4.4 *	3.8	4.0 *	4.0 *	3.0			
	Stabilizer	Stabilizer							4.9 *	4.9 *	4.9 *	4.4 *	4.4 *	3.9	4.0 *	4.0 *	3.0			
3 m	Blade	Stabilizer				6.6 *	6.6 *	6.6 *	5.4 *	5.4 *	4.9	4.6 *	4.6 *	3.7	4.1 *	4.1 *	3.0	3.2 *	3.2 *	2.4
	Stabilizer	Stabilizer				6.6 *	6.6 *	6.6 *	5.4 *	5.4 *	4.9	4.6 *	4.6 *	3.7	4.1 *	4.1 *	3.0	3.2 *	3.2 *	2.4
2 m	Blade	Stabilizer				7.3 *	7.3 *	6.3	5.8 *	5.8 *	4.6	4.9 *	4.9 *	3.6	4.2 *	4.2 *	2.9	3.7 *	3.6	2.4
	Stabilizer	Stabilizer				7.3 *	7.3 *	6.4	5.8 *	5.8 *	4.7	4.9 *	4.9 *	3.6	4.2 *	4.2 *	2.9	3.7 *	3.7 *	2.4
1 m	Blade	Stabilizer				7.9 *	7.9 *	6.1	6.1 *	6.1 *	4.5	5.0 *	5.0 *	3.5	4.3 *	4.3 *	2.9	3.7 *	3.6	2.4
	Stabilizer	Stabilizer				7.9 *	7.9 *	6.1	6.1 *	6.1 *	4.5	5.0 *	5.0 *	3.5	4.3 *	4.3 *	2.9	3.7 *	3.7 *	2.4
0 m	Blade	Stabilizer	7.1 *	7.1 *	7.1 *	8.0 *	8.0 *	5.9	6.2 *	6.2 *	4.4	5.1 *	5.1 *	3.4	4.3 *	4.3 *	2.8	2.8 *	2.8 *	2.4
	Stabilizer	Stabilizer	7.1 *	7.1 *	7.1 *	8.0 *	8.0 *	6.0	6.2 *	6.2 *	4.4	5.1 *	5.1 *	3.5	4.3 *	4.3 *	2.8	2.8 *	2.8 *	2.4
-1 m	Blade	Stabilizer	8.8 *	8.8 *	8.8 *	7.7 *	7.7 *	5.8	6.0 *	6.0 *	4.3	4.9 *	4.9 *	3.4	4.0 *	4.0 *	2.8			
	Stabilizer	Stabilizer	8.8 *	8.8 *	8.8 *	7.7 *	7.7 *	5.9	6.0 *	6.0 *	4.3	4.9 *	4.9 *	3.4	4.0 *	4.0 *	2.8			
-2 m	Blade	Stabilizer	8.8 *	8.8 *	8.8 *	6.9 *	6.9 *	5.9	5.6 *	5.6 *	4.3	4.5 *	4.5 *	3.4	3.4 *	3.4 *	2.8			
	Stabilizer	Stabilizer	8.8 *	8.8 *	8.8 *	6.9 *	6.9 *	5.9	5.6 *	5.6 *	4.4	4.5 *	4.5 *	3.4	3.4 *	3.4 *	2.8			
-3 m	Blade	Stabilizer							4.6 *	4.6 *	4.4									
	Stabilizer	Stabilizer							4.6 *	4.6 *	4.4									

Lift capacities in tons (T) at the articulated jib end, without bucket tipping cylinder, without tool. Values on level ground, locked pendulum axle, and pressure switched on. Values laterally to the undercarriage apply throughout 360° rotatable. The values Laterally 1) apply supported. The values longitudinally to the undercarriage apply supported across the rigid axle as well as unsupported across the steering axle. The indicated load values are stated according to ISO 10567. imply a stability of 25% and are calculated at 87% of the maximum hydraulic lifting capacity. An asterisk (*) marks the values that are limited by hydraulic lifting capacity.





1919

FOUNDATION

Hinrich Weyhausen founds the company and initially produces agricultural equipment at the Delmenhorst location.

1945

THE FIRST PATENT

The first patent for an ATLAS attachment crane is granted.

1950

FIRST FULLY HYDRAULIC EXCAVATOR

With the first fully hydraulically operated ATLAS excavator, the success story for an entire industry begins.

1956

ATLAS VECHTA

Start-up of the ATLAS factory at Vechta.

1960

ATLAS GANDERKESEE

Start-up of the ATLAS factory at Ganderkesee.

1965

RAIL-ROAD EXCAVATOR

The world's first ATLAS rail-road excavator lays the foundation for a leading position in this market.

1980

ATLAS UK

Start-up of the ATLAS Cranes production site at Bradford, England.

1986

ATLAS WHEELED EXCAVATOR 1304

Market launch of the best-selling ATLAS excavator model yet.

2001

CHANGE OF MANAGEMENT

ATLAS is taken over by the American Terex Corporation.

2010

ATLAS MASCHINEN GMBH

The entrepreneur Fil Filipov acquires ATLAS and re-establishes the company as an independent business under the name of ATLAS Maschinen GmbH.

2012

SPARE PARTS GMBH

Foundation of ATLAS Spare Parts GmbH – in order to improve the efficiency of spare parts supply.

2014

NEW MANAGING DIRECTOR

ATLAS expands its product portfolio by tunnel excavators. At the same time, Brahim Stitou is appointed as managing director with sole power of representation of ATLAS Maschinen GmbH.

2015

INNOVATION 3

ATLAS delivers the first electric excavator with many more to follow.

The newly founded ATLAS Group Services GmbH now provides all training courses, which take place in the in-house training center.

The name of the company is changed from ATLAS Maschinen GmbH to ATLAS GmbH.

2017

MINI- AND MIDI-EXCAVATORS

ATLAS expands its product portfolio by mini- and midi-excavators.

2019

100-YEAR ANNIVERSARY

ATLAS proudly looks back on a 100-year history and duly celebrates the centennial.

2020

READY FOR THE FUTURE

ATLAS presents the first battery-powered excavator. The 200 MH accu is used in recycling for Stadtreinigung Hamburg.

Effective immediately, ATLAS machines are equipped with a stage V exhaust after-treatment system.

ATLAS manufactures driver's cabs in-house.

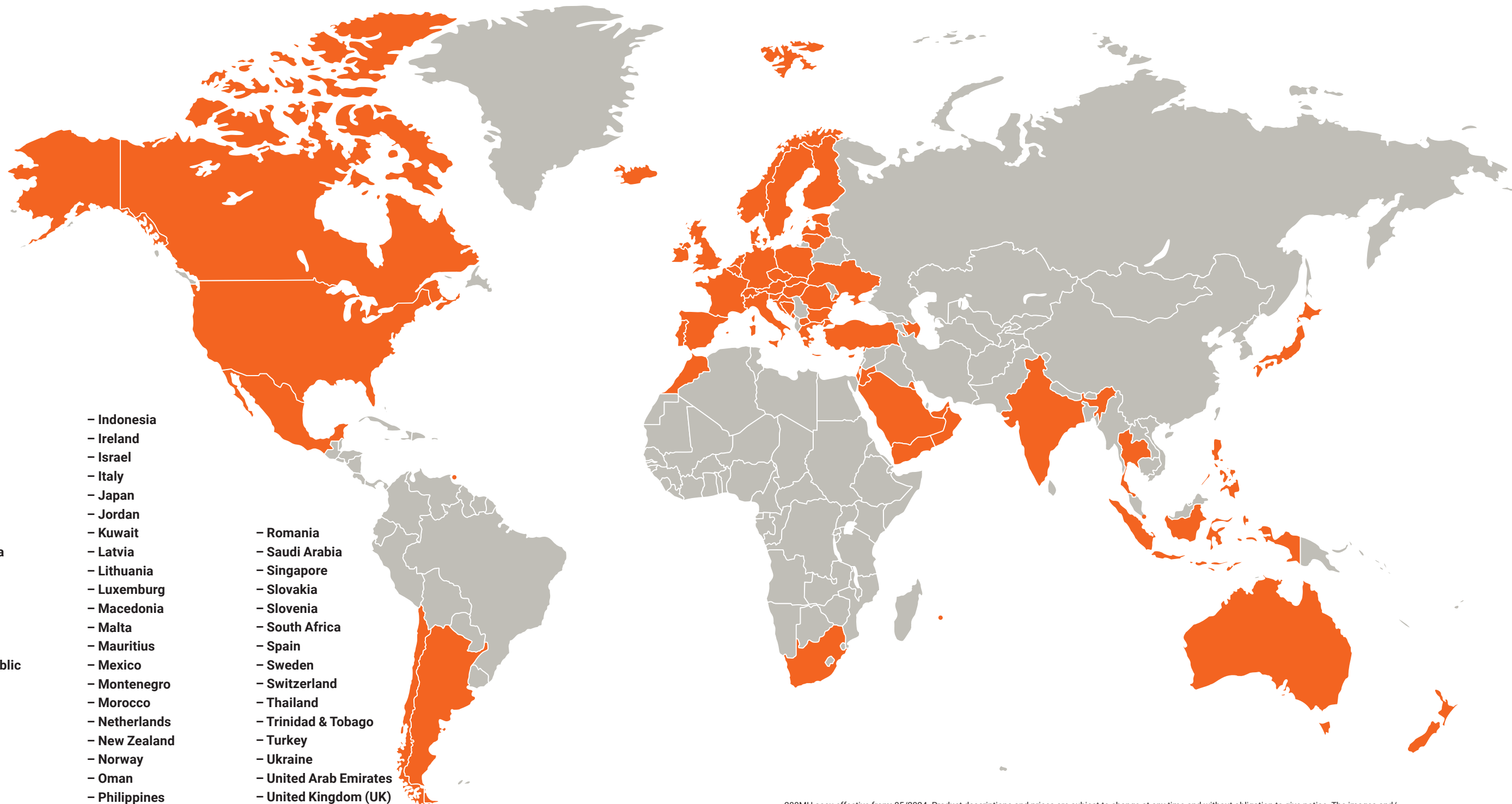
2023

A LOOK AHEAD INTO THE FUTURE

ATLAS modernizes its branding, revises the type designations ZW, MW, wheeled, cranes, and enhances its profile to be well prepared for the future.

**INNOVATIVE.
PASSIONATE.
PIONEERING.
SINCE 1919.**

OUR STRONG DEALER NETWORK.



- Argentina
- Australia
- Austria
- Azerbaijan
- Bahrain
- Belgium
- Bosnia and Herzegovina
- Bulgaria
- Canada
- Chile
- Croatia
- Cyprus
- Czech Republic
- Denmark
- Estonia
- Finland
- France
- Germany
- Greece
- Hungary
- Iceland
- India
- Indonesia
- Ireland
- Israel
- Italy
- Japan
- Jordan
- Kuwait
- Latvia
- Lithuania
- Luxemburg
- Macedonia
- Malta
- Mauritius
- Mexico
- Montenegro
- Morocco
- Netherlands
- New Zealand
- Norway
- Oman
- Philippines
- Poland
- Portugal
- Romania
- Saudi Arabia
- Singapore
- Slovakia
- Slovenia
- South Africa
- Spain
- Sweden
- Switzerland
- Thailand
- Trinidad & Tobago
- Turkey
- Ukraine
- United Arab Emirates
- United Kingdom (UK)
- USA
- Yemen

200MH accu effective from: 05/2024. Product descriptions and prices are subject to change at any time and without obligation to give notice. The images and/or drawings contained in this document are for illustrative purposes only and may differ from the standard version. For instructions for proper use, please refer to the corresponding operation manual. Failing to observe the operating manual when using our products or other negligent behavior may result in serious personal injury or death. The only warranty applicable to this product is the corresponding standard written warranty. ATLAS does not provide any warranty beyond this, neither explicitly nor implicitly. The designations of the listed products and services may be trademarks, service marks or trade names of ATLAS GmbH and / or their affiliates. All rights reserved. "ATLAS" is a registered trademark of Atlas GmbH.

Copyright © 2024 ATLAS GmbH.



GANDERKESEE FACTORY

Atlas GmbH
Atlasstrasse 6
27777 Ganderkesee. Germany
T: +49 (0) 4222 954 0
F: +49 (0) 4222 954 220
info@atlasgmbh.com
www.atlasgmbh.com

VECHTA FACTORY

Atlas GmbH
Theodor-Heuss-Str. 3
49377 Vechta. Germany
T: +49 (0) 4441 954 0
F: +49 (0) 4441 954 299
info@atlasgmbh.com
www.atlasgmbh.com

DELMENHORST FACTORY

Atlas GmbH
Stedinger Strasse 324
27751 Delmenhorst. Germany
T: +49 (0) 4221 491 0
F: +49 (0) 4221 491 443
info@atlasgmbh.com
www.atlasgmbh.com

ENGLAND LOCATION

Atlas Cranes UK Ltd.
National Sales & Service Facility
Wharfedale Road.
Euroway Trading Est.
Bradford. England BD4 6SL
United Kingdom
T: +44 1274 900900
F: +44 2746 53785
atlasuk@atlas-cranes.co.uk
www.atlas-cranes.co.uk